

# LOUISIANA BIRD RECORDS COMMITTEE

## REPORT FORM

This form is intended as a convenience in reporting observations of species on the Louisiana Bird Records Committee (LBRC) Review List. The LBRC recommends the use of this form or a similar format when submitting records for review (to assure that all pertinent information is accounted for). Attach additional pages as necessary. Please print or type. Attach xerox of field notes, drawings, photographs, or tape recordings, if available. Include all photos for more obscurely marked species. When completed, mail to Secretary, Louisiana Bird Records Committee, c/o Museum of Natural Science, 119 Foster Hall, Louisiana State University, Baton Rouge, LA 70803-3216.

1. English and Scientific names: [Green-tailed Towhee, \*Pipilo chlorurus\*](#)
2. Number of individuals, sexes, ages, general plumage (e.g., 2 in alternate plumage): [One individual, sex/age unknown](#)
3. Locality: Parish: [Cameron](#) \_\_\_\_\_  
Specific Locality: [Jimmy Savoie Rd at 29.7972, -93.1988](#) \_\_\_\_\_
4. Date(s) when observed: [4 January 2025](#)
5. Time(s) of day when observed: [ca. 1400 CST](#)
6. Reporting observer and address: [Robert C. Dobbs, Lafayette, LA](#)
7. Other observers accompanying reporter who also *identified* the bird(s): [Paul Klerks](#)
8. Other observers who independently identified the bird(s): [see eBird reports](#)
9. Light conditions (position of bird in relation to shade and to direction and amount of light): [overcast sky, but fairly bright light of mid-afternoon; bird seen in-flight in the open, but all other views within vegetation and thus some shade](#)
10. Optical equipment (type, power, condition): [Swarovski 10x42 binos \(good condition\), Nikon AF-S 300 mm 1:4 D camera lens \(good condition\)](#)
11. Distance to bird(s): [all views ca. 5 m distance](#)
12. Duration of observation: [30-45 min in total; good views of the bird only ca. 30-45 sec \(during 3-4 instances when bird allowed view within veg\)](#)

13. Habitat: *Baccharis*-dominated shrubby edge of degraded cheneier

14. Behavior of bird / circumstances of observation (flying, feeding, resting; include and stress habits used in identification; relate events surrounding observation): RCD heard GTTO “mew” call from ca. 40 m away, while playing screech-owl mobbing audio. We immediately moved toward the source of the “mew” call and broadcast GTTO vocalizations from the iBird Pro mobile app, to which the bird responded with more “mew” calls. We repeated this sporadically over the next 30-45 minutes, audio-recording the bird’s responding “mew” calls and unsuccessfully trying to photograph the bird for additional documentation. During the entire event, the bird stayed low in thick veg, almost always completely concealed except for occasionally making flights between patches of shrubs. The bird allowed 3-4 good views of ca. 10-15 sec each, but always from within vegetation that prevented camera focus.

15. Description (include only what was actually seen, *not what "should" have been seen*; include if possible: total length/relative size compared to other familiar species, body bulk, shape, proportions, bill, eye, leg, and plumage characteristics. Stress features that separate it from similar species): Structure like that of a large sparrow. Smaller than Eastern Towhee (present in same patch of shrubs), but much larger than Swamp Sparrows (also present). Green back, upper wings, and tail; conspicuous rufous crown and distinct head pattern of white throat, white malar stripe, and white supraloral contrasting with dark gray face, submalar stripe, and breast.

16. Voice: Characteristic “mew” call

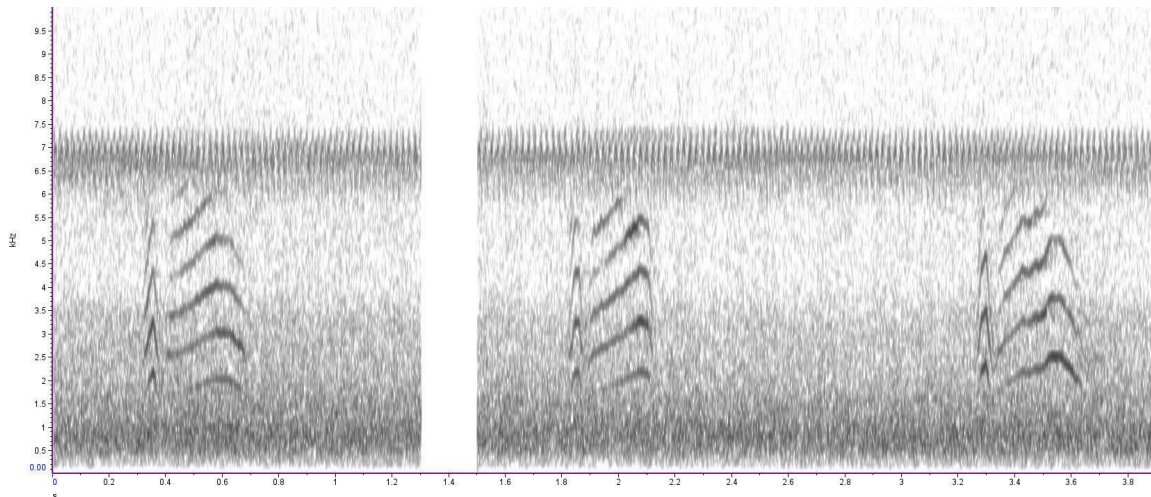


Fig 1A. Sound spectrogram of GTTO “mew” call recorded by RCD, 4 January 2025 (from audio file attached to this report)..

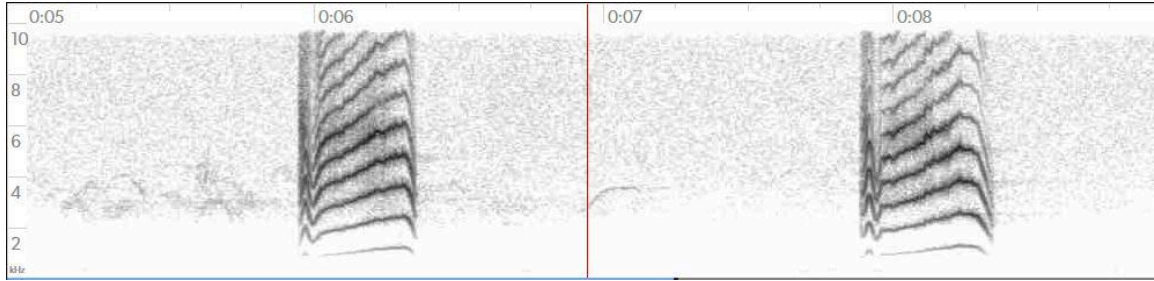


Fig 1B. Sound spectrogram of GTTO “mew” call from Peterson Field Guide to Bird Sounds (recorded by G.A. Keller, 29 May 2002, Modoc, CA); see <https://academy.allaboutbirds.org/peterson-field-guide-to-bird-sounds/?speciesCode=gnttow&species=Green-tailed%20Towhee%20-%20Pipilo%20chlorurus>

17. Similar species (include how they were eliminated by your observation): **No similar species visually, or vocally similar to GTTO “mew” call. Gray Catbird “mew” very different, with much more burry or scratchy quality, and longer in duration than GTTO “mew.”**
18. Photographs or tape recordings obtained? (by whom? Attached?): **Audio recording by Robert C. Dobbs/LDWF, attached (see also sound spectrogram above)**
19. Previous experience with this species: **Extensive, having worked on the species’ biology in Arizona, and having lived in western U.S. for years**
20. Identification aids: (list books, illustrations, other birders, etc. used in identification):
- a. at time of observation: **none**
- b. after observation: **none**
21. This description is written from: **X** notes made during the observation (**\_\_\_\_\_** notes attached? **notes in eBird list**); **\_\_\_\_\_** notes made after the observation (date: **\_\_\_\_\_**); **\_\_\_\_\_** memory; **\_\_\_\_\_** images taken during the observation.
22. Are you positive of your identification if not, explain: **Yes, positive**
23. Date: **5 January 2025** Time: **0920 CST**
24. May the LBRC have permission to display this report or portions of this report on its website? **Yes**
- If yes, may we include your name with the report? **Yes**

