

NEWSLETTER OF THE
LOUISIANA BIRD RECORDS COMMITTEE
Annual Meeting Report 2015

Annual Report, June 14, 2015



Louisiana's Second Ringed Kingfisher

Initially found and photographed (2014-045, left) at Lake Martin by Barry Broussard on 30 October 2014, word of Louisiana's second Ringed Kingfisher did not reach the birding community until it was 'rediscovered' by Robert C. Dobbs, 13 February 2015. Its earlier presence was only revealed when birders searching for the kingfisher talked with another local photographer, Gary Meyers, who had also photographed the bird but did not realize its significance.

Annual Meeting: 14 March 2015

Synopsis of the 2015 LBRC Annual Meeting

**by: Donna L. Dittmann, Secretary
& Steven W. Cardiff, Chair**

The LBRC's 2015 Annual Meeting was held on 14 March at the LSU Museum of Natural Science.

All Voting Members were in attendance: Steven W. Cardiff (Chair), Paul E. Conover, John Dillon, Donna L. Dittmann (Secretary), James L. Ingold, Erik I. Johnson, Nancy L. Newfield, Curtis C. Sorrells, and Phillip A. Wallace.

The purpose of the Annual Meeting is threefold. First, this is when Member elections are held. Second, additional business can be discussed and resolved, including final resolution of Fourth Circulation records. And, finally, the Meeting provides an opportunity to fast-track acceptance of numerous straightforward First Circulation records.

The Meeting was called to order at 9:30 AM and, after a break for lunch, was reconvened at nearby St. Gabriel at 2:20 PM, adjourning at 4:15 PM.

Record Review

Members reviewed 52 First Circulation records. Records included on the agenda were



Dr. James L. Ingold retires from the LBRC

Jim Ingold joined the LBRC in 2002, when he was elected to a one-year term as a Second Alternate Member - this is when the position of Second Alternate Member was first added to the LBRC. He was elected First Alternate Member in Fall 2003. In Fall 2004, Jim became a Voting Member and has served the LBRC since.

LBRC Members past and present thank Jim for his long service!

Annual Meeting 2015 - continued from page 1

chosen at the discretion of the Secretary, and included what she believed were well-documented, relatively non-controversial reports supported by photographic or specimen evidence most easily reviewed in a meeting format and with a high probability of acceptance (as outlined by the LBRC Bylaws; see <http://losbird.org/lbrc/bylaws.htm> for online copy). The majority of these were chosen from records posted at the online LBRC "pending records" pages, primarily page 7 <http://losbird.org/lbrc/viewreport.html>.

For those records included in an Annual Meeting First Circulation, Member votes are anonymous and without comment, and acceptance must be unanimous. If a record vote is not unanimous or there appears to be some problem with a record, then that record will begin a traditional First Circulation via "E-Round." Occasionally, a record is not accepted during a Meeting simply because one or more Members prefer to see other Member comments or make comments during a normal circulation. In the case of one record, part of the documentation was missing from its file.

Forty-eight of the 52 First Circulation records were accepted at the Meeting and are included in the *Eighteenth Report of the Louisiana Bird Records Committee* (see p. 5). Highlights included the second accepted Louisiana occurrence of Ringed Kingfisher, third accepted records of Red-throated Loon and Lucy's Warbler, and fifth of

Connecticut Warbler. The four records that did not receive a unanimous accept vote will circulate in E-Round 151.

Other LBRC Business:

Fourth Circulation Record Discussion and Resolution

Ten Fourth Circulation records were discussed and resolved at this Meeting and included in the Eighteenth Report (p. 5).

Member Elections

Terms of two Voting Members concluded at the Spring 2015 Meeting: James L. Ingold (Shreveport) and Erik I. Johnson (Lafayette). Erik was re-nominated and re-elected for another four-year term. Jim Ingold chose to retire from the Committee, and Robert C. Dobbs was nominated and elected to fill the vacancy. Officers Donna L. Dittmann (Secretary) and Steven W. Cardiff (Chair) were also each re-elected for new one-year terms.

Changes to the Review List

The Committee maintains, and annually reassesses, a "Review List" of species that have been confirmed at least once in the state, and the LBRC evaluates all submitted reports of these species as well as

reports of any species not on the State List. As per guidelines in the LBRC Bylaws, species qualify for the Review List if they average four or fewer *accepted* occurrences annually averaged over the preceding ten-year period or, in the case of exotics, if a species is potentially colonizing the State. In some cases, a species may remain on the Review List even though the number of reports exceeds the threshold for “de-listing.” This is usually either because the LBRC has judged that the difficulty of identification warrants keeping the species on the list, or because the number of actual *accepted* records *on file* is substantially fewer than the total number of reports generated by the birding community.

The LBRC discussed the status of four Review List species for potential removal from the Review List. Members discussed pros and cons of removing each species, as well as the general LBRC policy of “all or none removal” inasmuch that we have not allowed the Review List to be “micro-managed” (e.g., excluding review of reports of certain sexes/plumages or from certain seasons or prescribed subsections of the state).

Cinnamon Teal. Currently, accumulated records meet or exceed the threshold of 4/year averaged over a ten-year period. We also occasionally see or receive reports from hunters. Males are easy-to-identify (e.g., photo below). However, females present a serious identification problem. In fact, LBRC 2009-23 (see p. 15) includes the first accepted occurrence of a female. Hybrids (Blue-winged X Cinnamon) occur and have been observed in Louisiana, compounding identification. Despite these identification challenges, a majority of Members were in favor of removing this species from the Review List based on its annual occurrence.

Photo below (2014-028) by Steven W. Cardiff on 15 February 2015 at Cameron Prairie NWR.



continues next page

Bell’s Vireo and Willow Flycatcher. These two species were treated together. Both species have small established breeding populations in northern Louisiana. Both can be difficult to identify, but based on their recent sustained breeding status, a vote was taken and all Members were in favor of their removal from the Review List.

Say’s Phoebe. Although a substantial number of recent records pertain to (presumed) multi-year “returnees,” these still count as separate occurrences and the total number of accumulated recent occurrences is well in excess of the Review List threshold. And, importantly, unlike



irruptions of some other Review List species (e.g., Spotted Towhee and Green-tailed Towhee), numbers of Say’s Phoebes continued to appear well past the initial “invasion” year. Although Members agreed that the species could once again become much rarer in the future, after a brief discussion a vote was taken and all Members voted to remove from the Review List. Photo above (2014-088) by Steven W. Cardiff, 20 December 2014 in Cameron Parish, vicinity of Chalkley and Welch roads.

Considering the decisions to de-list Bell’s Vireo and Willow Flycatcher, Smith’s Longspur was brought up because of its very restricted wintering area at the Shreveport Airport, where associated with three-awn grass (*Aristida oligantha*) habitat. Although this species can at present be reliably found annually at the Shreveport Airport, typically there are two or fewer reports per year from there and virtually no accepted records from outside Shreveport. Members were on the verge of excluding Shreveport reports from requiring Committee review, but after further consideration about our “all or none” policy, the species was retained on the Review List.

The following species were also mentioned for possible removal from the Review List: Great Black-backed and Glaucous gulls, Gray Kingbird, Black-whiskered Vireo, and Bullock’s Oriole. However, we were not prepared to discuss current status (records/year averaged over 10-year period) of these species and, with time running short, agreed to delay debating the removal of these species until the 2016 Meeting.

The addition of introduced species to the State List was again discussed. Specifically, the status of Monk Parakeet (not on State List, but on Review List as a means to encourage reports/tracking) was debated, and it was generally agreed that the species is established in the

Greater New Orleans area. However, in considering Monk Parakeet, the status of feral (versus wild vagrant) Canada Goose and Muscovy were also discussed because there are also local feral 'populations' of these species scattered throughout the state. Like Monk Parakeet, these species are largely associated with urban/suburban refugia, an important contrast with more "successful"

recent state colonists such as Eurasian Collared-Dove and House Finch. Conover stressed that species added *should stay on a state list*, not "come and go," which has been a common phenomenon in

other states as well as in Louisiana. Black Francolin, for example, was introduced to Cameron Parish in the early 1960s, and by the mid-1970s was a "conspicuous part of the avifauna...and observed north of the Intracoastal Canal and near Lake Charles" (Lowery 1974). However, the species just as quickly disappeared and was gone by the late 1970's. A straw poll was taken and a majority of Members were opposed to adding Monk Parakeet to the State List at this time.

Additions to the Review List

There were no suggested additions to the Review List, and there were also no additions to the Review List by virtue of newly accepted first state occurrences.

The LBRC continues to emphasize the need to submit documentation for Review List species even though a species may appear to be more regular and/or approaching the threshold for removal from the Review List.

The LBRC requests documentation for records of the following recognizable subspecies or forms: "Great White" Heron, Northern "Red-shafted" Flicker, Yellow-rumped "Audubon's" Warbler, and non-Slate-colored forms of Dark-eyed Junco (e.g., "Gray-headed," "Oregon," and "Pink-sided" types have occurred in Louisiana). There are no accepted records of "Great White" Heron or "Red-shafted" Flicker.

The LBRC also requests documentation for records of any species not currently accepted on the State List. This includes species of captive/introduced origin not currently recognized on the State List (e.g., Monk



A successful introduced species!

First observed in Louisiana in 1988, today the Eurasian Collared-Dove is common statewide.

Parakeet) or Review List (e.g., Black Francolin and Ring-necked Pheasant). To properly evaluate whether species have become established, it is necessary to receive reports, especially those pertaining to breeding (see above).

The State List totals 479 species, 149 of which are on the Review List.

LBRC Website.

The photo gallery is a work in progress. Paul Conover is diligently working to move resolved accepted records to the species photo gallery pages: <http://www.losbird.org/lbrc/reviewlist.html>. This is a time-consuming project and will be ongoing. Many records remain listed at the View Pending Reports pages that have been resolved by the LBRC and may linger there a while longer. Although it may appear that the LBRC has a substantial backlog based on the Pending Pages, most of the records have been resolved or will be included in upcoming E-Rounds.

In addition to records found at the Pending Pages, photos of older records in the LBRC files will be scanned and uploaded, such as Louisiana's first record of Lesser Sand-Plover (1975-002) photographed at Grand Isle on 22 April 1975 by David N. Doubleday and published in color here (below) for the first time.



Plumage terminology.

Members briefly discussed whether it is more prudent to use official molt terminology (e.g., "Basic," "Alternate," "cycle," etc.) versus descriptive plumage/aspect terms (immature, adult, breeding, non-breeding, etc.) in LBRC reports. Members agreed to use descriptive terms as much as possible, but also to provide information about stage of molt (e.g., molt to primary 8, body molt in progress, etc.) if known.

The Meeting was adjourned at 4:15 PM.

Louisiana's Third Red-throated Loon



Louisiana's third occurrence of Red-throated Loon (2014-032), found at Lake D'Arbonne in late fall 2014, is just the second supported by hard-evidence. The excellent photographs, including two shown here, were taken by Stephen L. Pagans on 5 November 2014.

Eighteenth Report of the Louisiana Bird Records Committee

Donna L. Dittmann, LBRC Secretary & Steven W. Cardiff, LBRC Chair

format follows that of LBRC reports previously published in the *Journal of Louisiana Ornithology*

see: http://losbird.org/jlo/jlo_v8.pdf

The Louisiana Bird Records Committee (henceforth LBRC or Committee) was established in 1979 to evaluate and archive records of unusual species that occur in Louisiana. The LBRC strives to determine record acceptability to aid in understanding the patterns of occurrence of rarities in the state. Each record (in the form of observers' written reports, copies of field notes, photographs, videotapes, audio recordings, or specimens) is reviewed by each of nine elected LBRC Voting Members (in accordance with LBRC Bylaws, *LOS News* No. 87; Bylaws last amended 12 March 2011 and viewable at www.losbird.org). All records submitted to the LBRC are archived at the Louisiana State University Museum of Natural Science (henceforth LSUMNS) and/or on the LBRC webpages.

The First through Fourth Reports of the LBRC were published in the *LOS News*, and the Fifth through Tenth Reports appeared in the *Journal of Louisiana Ornithology* (JLO). Scanned versions of reports One through Ten are available online at <http://www.losbird.org/lbrc/LBRCReports.htm>. Between 2008 and 2012, accumulating reviewed records were compiled into an ever-increasing manuscript titled the *Eleventh Report of the LBRC*, and intended to appear in the JLO. Also in 2008, the LBRC published its first online LBRC Annual Newsletter as a means to disseminate actions of the LBRC to the birding community in a more timely fashion, which included publication of First Circulation records accepted at LBRC Annual Meetings. In 2013, the LBRC shifted publication of its official Reports to the LBRC Annual Newsletter, which would allow the LBRC to publish an Annual Report as originally called for in the LBRC Bylaws by its founding Members. To avoid needless duplication of records published in Annual Newsletters 2008-2012, only records that did not appear in those newsletters appear in this report. The official publication citations for LBRC Reports in Annual Newsletters 2008-2014 are as follows:

- Dittmann, Donna L. 2008. First circulation records accepted at the Annual Meeting 2008 (=Eleventh Report of the LBRC). Newsletter of the Louisiana Bird Records Committee 2008: 7-10.
- Dittmann, Donna L. 2009. First circulation records accepted at the Annual Meeting 2009 (=Twelfth Report of the LBRC). Newsletter of the Louisiana Bird Records Committee 2009: 7-13.
- Dittmann, Donna L. 2010. First circulation records accepted at the Annual Meeting 2010 (=Thirteenth Report of the LBRC). Newsletter of the Louisiana Bird Records Committee 2010: 7-13.
- Dittmann, Donna L. 2011. First circulation records accepted at the Annual Meeting 2011 (=Fourteenth Report of the LBRC). Newsletter of the Louisiana Bird Records Committee 2011: 5-14.
- Dittmann, Donna L. 2012. First circulation records accepted at the Annual Meeting 2012 (=Fifteenth Report of the LBRC). Newsletter of the Louisiana Bird Records Committee 2012: 5-14.
- Dittmann, Donna L. 2013. First circulation records accepted at the Annual Meeting 2013: 12th Report of the LBRC (now=Sixteenth Report of the LBRC). Newsletter of the Louisiana Bird Records Committee 2013: 4-22.
- Dittmann, Donna L. 2014. First circulation records accepted at the Annual Meeting 2014: 13th Report of the LBRC (now=Seventeenth Report of the LBRC). Newsletter of the Louisiana Bird Records Committee 2014: 4-23.

Three hundred forty-five records included herein were circulated, reviewed, and resolved as follows: in mail rounds 77, 115, 124-127, and 132; in older E-Rounds 128 (part; accepted records published in 10th Report), 129-142; during the past year in E-Rounds 147-150; during Fourth Circulation Discussion Votes at the 2015 LBRC Annual Meeting; and as First Circulation records at the 2015 Annual Meeting. Forty-eight unanimously accepted (without comment) First Circulation records reviewed at the 2015 Annual Meeting are shown in **dark blue font** to distinguish them from records that circulated in traditional rounds.

Of reports published herein, there is a 59% acceptance rate, much lower than would be predicted considering the increasingly superior documentation submitted by observers in recent years [thanks in part to the digital revolution - nearly everyone now carries a digital camera or audio-recording equipment and is better prepared to document their rare finds]. However, the acceptance rate has been artificially skewed downward by the inclusion of unaccepted reports resolved between 2008-2012 that were not published in the Annual Newsletters 2008-2012. With publication of this Eighteenth Report, all records currently resolved by the LBRC are published.

Records are organized in taxonomic order as per the *AOU Checklist of North American Birds*, 7th Edition through the 53rd Supplement: <http://www.aou.org/checklist/north/print.php>. Where possible, notes on plumage are descriptive, and molt terminology follows Humphrey and Parkes (1959): <http://sora.unm.edu/node/20715/> or Pyle (1997).

The following LBRC Members, past and present (alphabetically), have participated in the review of records contained in this report: Steven W. Cardiff, Paul E. Conover, D. B. Crider, Paul M. Dickson, Donna L. Dittmann, William F. Fontenot, James L. Ingold, Joseph P. Kleiman, Charles E. Lyon, Paul M. McKenzie, David P. Muth, B. Mac Myers III, Nancy L. Newfield, Dave Patton, J. V. Remsen, Thomas S. Schulenberg, Alfred E. Smalley, Curtis C. Sorrells, Ronald J. Stein, and Phillip A. Wallace.

The LBRC thanks all who contributed to records included in this Report, regardless of whether records are considered accepted or unaccepted. The name of submitting observer(s) follows all accepted records. As per LBRC policy, submitting observers are not listed for records that are considered unaccepted. If photographic (ph), specimen (LSUMZ), or autopsy (initials and prep number) documentation is submitted as part of the record, then that abbreviation follows the observer's name. If the original discoverer(s) is known and submitted a report, then their name is boldfaced; if the discoverer is known but did not submit a report, then they are mentioned at the end of the record entry. The LBRC record archives, as well as all specimens reported herein, are housed at the Louisiana State University Museum of Natural Science (LSUMNS). For archival purposes, the LBRC will accept additional reports/documentation or corrections for any resolved record. A corrigendum will appear in the next Annual Report.

Abbreviations used: Blvd. (=Boulevard); CBC (=Christmas Bird Count); Dr. (=Drive); Hwy. (=Highway); Ln. (=Lane); mi. (=miles/miles); ca = about or approx./approximately; Peveto Woods Sanctuary (=Baton Rouge Audubon Society Peveto Woods Sanctuary at Johnsons Bayou, Cameron Parish; also =Peveto Beach Woods, used in previous LBRC Reports); NWR (=National Wildlife Refuge); Rd. (=Road); SP (=State Park); St. (=Street); TNC (=The Nature Conservancy); White Lake WCA (= White Lake Wetlands Conservation Area); WMA (=Wildlife Management Area). Compass directions are abbreviated and capitalized (e.g., W = west of). Parish names are italicized. "Sureway Woods" used in previous Reports =TNC Landry-LeBlanc Tract. Note that Johnsons Bayou (used here and in previous LBRC reports) = Johnson Bayou or Johnson's Bayou (also commonly used).

ACCEPTED RECORDS

IDENTIFICATION AND NATURAL ORIGIN ACCEPTED FOR THE FOLLOWING 203 RECORDS:

Black-bellied Whistling-Duck (*Dendrocygna autumnalis*)

Forty-seven mixed adults and juveniles (1988-089) on 18 December 1988, *Evangeline*: Cazan's Lake, ca 9 mi. N Ville Platte; William F. Fontenot.

Eleven adults (1989-117) on 26 December 1989, *Evangeline*: Cazan's Lake, ca 9 mi. N Ville Platte; William F. Fontenot.

This species was removed from the Review List on 31 March 1990.

Eurasian Wigeon (*Anas penelope*)

One male (2014-029) on 30 December 2014-27 January 2015, *Cameron*: Cameron Prairie NWR, Pintail Loop; independently found by **Billy Jones** (ph, p. 15) and **Daniel F. Lane** (ph at right); Michael J. Musumeche (ph), Erik I. Johnson (ph), Robert C. Dobbs (ph), Jay V. Huner, John Dillon, Devin Bosler, David McDonald (ph), John A. Whittle (ph only). Also reportedly independently discovered by Fred Pratt on 29 December 2014.



2014-029

Cinnamon Teal (*Anas cyanoptera*)

One adult male (2007-039) on 8 May 2007, *Cameron*: large impoundment ca 1 mi. E Sabine Pass on Hwy. 82; Paul E. Lehman.

One adult male (2009-015) on 11 January 2009, *Cameron*: Lacassine NWR, Pool Unit at viewing platform; B. Mac Myers III.

One male (2009-057) on 5 March 2009, *Cameron*: Sabine NWR; Gay Gomez.

Pair (2009-023) on 15 and 17 March 2009, *Rapides*: Cheneyville-Echo Rd., ca 1.5 mi. S Echo; Jim E. Johnson (ph, p. 15).

This report includes the first accepted occurrence of a female in Louisiana.

continues next page

Cinnamon Teal (*Anas cyanoptera*)-cont.

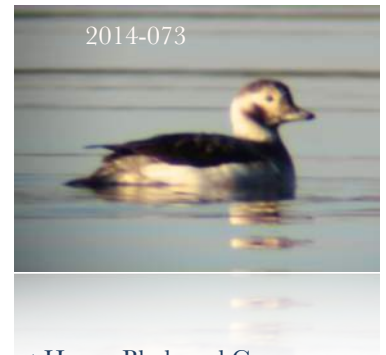
- One adult male (2010-050) on 12 December 2010, *Cameron*: Lacassine NWR, Pool Unit; Dennis K. Demcheck (ph, p. 15).
- One adult male (2012-121) on 6 March 2012, *Vermilion*: W. Bell Rd., W. boundary of the old Vincent Refuge, ca 3 mi. N Kaplan; Paul E. Conover (ph, p. 15). Note: this record may pertain to the same individual (2011-105) from 19-20 November 2011 at the same locality and previously accepted (2013 LBRC Newsletter).
- One adult male (2012-122) on 7 March 2012, *Acadia*: Troups Rd., ca 6 mi. SE Crowley; Paul E. Conover (ph, p. 15).
- One adult male (2013-070) on 24 March and 13 April 2013 (presumably same individual both dates); *Jefferson*: Grand Isle; Phillip A. Wallace (ph) and Dan O'Malley (ph, p. 15).
- One adult male (2014-067) on 22 March 2014, *Cameron*: Cameron Prairie NWR, Pintail Loop; Robert C. Dobbs (ph, p. 15).
- Two adult males (2014-028), one beginning 30 November 2014; two from 8 January 2015 through at least 15 February 2015, *Cameron*: Cameron Prairie NWR, Pintail Loop; Sandra Dehart (ph), Billy Jones (ph), Thomas Finnie (ph), Steven W. Cardiff (ph, p. 3) and Donna L. Dittmann (ph).
- This species was removed from the Review List on 14 March 2015.

White-winged Scoter (*Melanitta fusca*)

- One (2008-039) on 27 April 2008, *Cameron*: Holly Beach, ca 3 mi. W Calcasieu River ferry; Paul E. Conover (ph).
- One female (2014-068) on 10 February 2014, *St. Martin*: Lake Martin; Robert C. Dobbs and Gary Meyers (ph only, p. 15).
- One adult female (2014-022) on 13 February 2014, *Rapides*: Kincaid Recreation Area, Kincaid Lake; Steve Shively.
- Up to 13 (2014-021) on 15-21 February 2014, *Rapides*: Kincaid Recreation Area, Kincaid Lake, observed from E. side of dam face; Charles E. Lyon (ph only) and Jay V. Huner.
- Five, including two adult males (2014-020), on 6 March 2014, *Rapides*: Kincaid Recreation Area, Kincaid Lake; Jay V. Huner.
- One female (2014-069) on 5 December 2014, *Natchitoches*: Red River, N of Lock and Dam No. 3 near former Northwestern State University Aquaculture Research Center; Florinus Kooyman (ph, p. 15).
- This species was added to the Review List 11 Mar 1989 and may be considered for removal at the 2016 LBRC Annual Meeting.

Long-tailed Duck (*Clangula hyemalis*)

- One female (2012-124) on 24 March 2012, *Cameron*: Johnsons Bayou, rock jetty about ¼ mi. E Peveto Woods Sanctuary; Jay V. Huner and Erik I. Johnson (ph, p. 15).
- One female (2013-094) on 27 December 2013, and presumably the same individual 17-18 February 2014, *St. Tammany*: S Madisonville on Lake Pontchartrain at mouth of Tchefuncte River; Christopher G. Brantley and Janine Robin.
- One female/first winter male (2014-073) on 29 January-3 February 2014, *Union*: Lake D'Arbonne, where Hwy. 15 crosses lake; Glenn Golson Jr. (ph, p. 15) and Devin Bosler (ph at right). Reportedly first discovered on 8 January 2014 by Gerry Click.
- This species was added to the Review List 17 April 2010.

**Common Merganser (*Mergus merganser*)**

- One female (2015-001) on 15 February 2015, *Orleans*: New Orleans, Lake Pontchartrain at Hayne Blvd. and Gannon Rd.; Phillip A. Wallace (ph, p. 15). Reportedly found by Kenneth V. Rosenberg.
- This species was added to the Review List on 11 March 1989.

Red-throated Loon (*Gavia stellata*)

- One (2014-032) on 2-15 ~~<and later?>~~ November 2014, *Union*: Lake D'Arbonne, W of boat launch spur, N of Hwy. 33 (15) bridge; Stephen L. Pagans (ph, p. 5), Willie Matthews, and Devin Bosler (ph). This is the third accepted state occurrence.

Red-necked Grebe (*Podiceps grisegena*)

- One probable immature (2004-013) on 6 March 2004, *Orleans*: New Orleans, Lake Pontchartrain, just offshore from Hayne Blvd. levee, between Little Woods and Lincoln Beach; David P. Muth.
- One (2014-036) on 2-22 November 2014, *Union*: Lake D'Arbonne, N of Hwy. 33; Stephen L. Pagans (ph), Willie Matthews (ph, p. 16), John Dillon (ph), and Mary Mehaffey (ph). Several individual reports were submitted for different days for this individual - the LBRC encourages observers to submit a single report for stake-out birds present at the same locality, which spans all days that the bird is observed. This a more thorough report and importantly guarantees that the last date observed is included. Specific information about each sighting can be outlined in a single report.

Cory's Shearwater (*Calonectris diomedea*)

- One (1998-137) on 2 October 1998, *Gulf of Mexico*: 93 mi. S of W. tip of Marsh Island, South Marsh Island 147 oil platform, N 28.216667° W 92.016667°; Brian P. Gibbons.
- One (1999-090) on 5 October 1999, *Gulf of Mexico*: 122 mi. S Morgan City, Green Canyon 18A oil platform, N 27.943611° W 91.029167°; Marshall J. Iiff.

Masked Booby (*Sula dactylatra*)

One immature (1998-090) on 4 May 1998, *Gulf of Mexico*: ca 120 mi. S Cameron, Garden Banks 189 A oil platform, N 27.778611° W 93.309444°; Jon R. King.

One immature (1998-092) on 9 May 1998, *Gulf of Mexico*: ca 120 mi. S Cameron, Garden Banks 189 A oil platform, N 27.778611° W 93.309444°; Jon R. King.

One subadult (1998-065) on 6 October 1998, *Gulf of Mexico*: 61 mi. S of East Timbalier Island, Ewing Bank 826 oil platform, N 28.163333° W 90.358611° (ca 90 mi. SW Venice); Richard L. (Rick) Knight. Although treated as a separate report, 1998-065 was possibly the same individual seen three days earlier (1998-64, accepted in the Tenth Report).

This species was removed from the Review List on 25 September 1999.

Brown Booby (*Sula leucogaster*)

Four, including at least two adults and one immature (2015-002), on 1 January 2015, *St. Tammany*: Mandeville, Lake Pontchartrain; Cathy DiSalvo and Lizette Wroten (ph only, p. 16).

Golden Eagle (*Aquila chrysaetos*)

One subadult (1994-107) on 28 October 1994, *Jefferson Davis*: junction of Hwys. 99 and 380, S of Welsh and W of Thornwell; Donna L. Dittmann and Steven W. Cardiff.

Two adults (2004-024) on 24 January 2004, *Morehouse*: Upper Ouachita NWR, Mollicy Unit; Rosemary Seidler (ph at right). Reportedly a stake-out for the winter LOS meeting and also reportedly seen previous day; Refuge Manager led all field trips right to locate birds.

One immature (2011-003) on 1 March 2011, *Morehouse*: Upper Ouachita NWR, Mollicy Unit; Stephen L. Pagans (ph, p. 16).

One adult (2013-095) on 28 December 2013, *Morehouse*: Upper Ouachita NWR, Mollicy Unit; John Dillon (ph, p. 16) and Tim Keyes.

One immature (2015-005) on 4 February 2015, *Morehouse*: Upper Ouachita NWR, Mollicy Unit; Gypsy Hanks (ph taken by automated camera at bait station, p. 16).

**White-tailed Hawk (*Buteo albicaudatus*)**

One adult (2006-052) on 10 December 2006, *Cameron*: Pine Pasture Rd.; Paul E. Conover.

One immature (2014-034) on 25 April 2014, *Cameron*: ca 1 mi. E of LNG tanks off Hwy. 82 near Sabine Pass; Matthew Pontiff (ph, p. 16) and Jay V. Huner.

Ferruginous Hawk (*Buteo regalis*)

One dark morph adult (2014-033) on 10-14 December 2014, *Jefferson Davis*: vicinity of Thornwell; **Donna L. Dittmann** (ph) and **Steven W. Cardiff**, Dave Patton (ph only, p. 16). This bird was rediscovered 1 January 2015 at *Cameron*: Cameron Prairie NWR headquarters area, where it remained to at least 15 February 2015; Erik I. Johnson (ph), J. V. Remsen (ph), Amy Shutt (ph only), Tom Finnie (ph, p. 16), John Dillon, Donna L. Dittmann (ph) and Steven W. Cardiff. Photos confirm that only one individual was involved at both locations.

Black Rail (*Laterallus jamaicensis*)

One heard singing (2013-069) on 23 March 2013, *Cameron*: Broussard Beach, 3.1 mi. ESE Cameron; Erik I. Johnson (audio).

Ruff (*Calidris pugnax*)

One (2008-063) on 17 July 2008, *Caddo*: Shaw Lake, section of pool #5 at mile marker 203 (in Elm Grove quad); Terry Davis.

One female in non-breeding plumage (2013-100) on 22-23 September 2013 and 23 October 2013, *Jefferson Davis*: SW of Thornwell near Hwy. 14 X 99; **Steven W. Cardiff** and Donna L. Dittmann (ph, p. 16).

One in non-breeding plumage (2014-037) on 27 September 2014, *Jefferson Davis*: ca 2 mi. NE Welsh, on S. side of Pecan Orchard Rd. near intersection with Freeland Rd.; Paul E. Conover (ph, p. 16).

Red-necked Phalarope (*Phalaropus lobatus*)

One in non-breeding plumage (2014-074) on 8-9 October 2014, *Livingston*: Denham Springs, Denham Springs Wastewater Department; J. V. Remsen (ph) and Matt Brady (ph, p. 17).

Pomarine Jaeger (*Stercorarius pomarinus*)

At least six individuals, identified as including one adult in non-breeding plumage, one adult molting into non-breeding plumage, another adult or subadult molting into non-breeding plumage, and two subadults (1993-080) on 18 December 1993, *Cameron*: Gulf of Mexico from off Calcasieu Pass (off the end of East Jetty at mouth Calcasieu River) W to off Holly Beach (Sabine NWR CBC); Donna L. Dittmann and Steven W. Cardiff.

This species was removed from the Review List on 7 September 1996.

Parasitic Jaeger (*Stercorarius parasiticus*)

One dark morph immature (2011-121) on 25 September 2011, *Gulf of Mexico*: vicinity of the Mississippi Canyon; John P. Sevenair (ph), Dave Patton (ph only, p. 17), Robert D. Purrington (ph only), and Erik I. Johnson (ph).

This species was removed from the Review List 16 March 2013.

Black-legged Kittiwake (*Rissa tridactyla*)

One in worn first breeding plumage (2007-044) on 29 April 2007, *Cameron*: East Jetty Beach, ca 1/4 mi. E of East Jetty and ca 2 mi. S of Cameron; Justin Bosler (ph, p. 17).

One adult in worn non-breeding plumage (2014-076) on 22 and 24 April 2014, *Cameron*: ca 6 mi. W old mouth Mermentau River (Rutherford Beach), N 29.7754°, W 93.213699°; Molly Richard (ph, p. 17) and Paul E. Conover (ph).

One immature (2014-042) on 26 April 2014, *Cameron*: ca 5 mi. W town of Holly Beach; Nancy L. Newfield (notes), Jay V. Huner, Marty Floyd, and Kevin Morgan (ph only, p. 17).

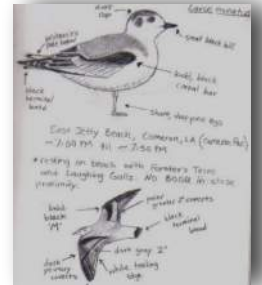
Sabine's Gull (*Xema sabini*)

One in Juvenal plumage (2007-064) on 21 October 2007, *Caddo*: Shreveport, Cross Lake; Charles E. Lyon.

Little Gull (*Hydrocoloeus minutus*)

One immature (2007-024) on 31 March 2007, *Cameron*: East Jetty Beach, ca 2 mi. S Cameron; Devin Bosler and Justin Bosler (sketch only, inset at right).

One (2014-038) on 5 April 2014, *Cameron*: about 2 mi. W town of Holly Beach; Paul E. Conover (ph, p. 17).

**California Gull (*Larus californicus*)**

One immature (2005-036) on 31 December 2005-1 January 2006, *Vermilion*: intersection Hwys. 167 and 696, S Maurice; Paul E. Conover (ph).

One second-year (2013-084) on 11 October 2013, *Cameron*: 1 mi. W Holly Beach; David P. Muth (ph, p. 17).

One third -ear/adult (2014-018) on 6 March 2014, *East Baton Rouge*: Zachary, East Baton Rouge Parish Landfill on W. Irene Rd.; Daniel F. Lane (ph, p. 17) and **Matt Brady**.

Thayer's Gull (*Larus thayeri*)

One first-year immature in pre-alternate molt (2009-017) on 28 February 2009, *Jefferson Davis*: Jefferson Davis Parish Landfill, ca 2 mi. NW Welsh; Devin Bosler (ph, p. 17).

Lesser Black-backed Gull (*Larus fuscus*)

One adult (1988-086) on 7 February 1988, *Orleans*: New Orleans, Lake Pontchartrain at Seabrook Bridge; Norton Nelkin and Robert D. Purrington.

This species was removed from the Review List on 7 September 1996.

Glaucous Gull (*Larus hyperboreus*)

One first-year immature (2008-028) on 31 March-5 April 2008, *Lafourche*: Port Fourchon, Fourchon Beach at mouth of Belle Pass; R. Martin Guidry, (ph) Justin Bosler (ph) and Devin Bosler (ph only).

One first-year immature (2013-068) on 20 March 2013; *Jefferson*: Elmer's Island WMA; Erik I. Johnson (ph, p. 17).

One first-year immature (2013-088) on 30 November 2013, *Cameron*: Cameron-Calcasieu ship channel [Calcasieu River] near mouth; Paul E. Conover (ph, p. 17) and Dave Patton (ph).

One first-year immature (2013-090) on 4 December 2013, *Jefferson*: Elmer's Island WMA, E. end; Erik I. Johnson (ph, p. 17).

One (2014-039) on 12 April 2014, *Plaquemines*: Venice, end of McDermott Rd.; Cameron Rutt (ph, p. 17).

One (2014-040) on 26 April 2014, *Cameron*: Holly Beach; Mary Mehaffey (ph, p. 17).

**Great Black-backed Gull (*Larus marinus*)**

One immature in first-summer/second-winter plumage (1995-085) on 16 September 1995, *Plaquemines*: Southwest Pass Mississippi River; Steven W. Cardiff.

One first-year immature (2007-020) on 24 February 2007, *Jefferson*: Grand Isle, near terminus of Caminada Rd.; Justin Bosler (ph, p. 18).

One adult or near adult (2009-014) on 3 February 2009, *Terrebonne*: Timbalier Island, N 24.077650°, W 90.527433°; B. Mac Myers III (ph, p. 18).

One adult (2013-091) on 17 December 2013, *Terrebonne*: Isles Dernieres, Whiskey Island; Robert C. Dobbs (ph, above left).

One first-year immature (2014-041) on 13 April 2014, *Jefferson*: Grand Isle, Grand Isle SP; Dan O'Malley (ph, p. 18).

One immature (2014-071) on 8 October 2014, and 14 January and 9 February 2015, *Jefferson*: Elmer's Island WMA and vicinity; Matt Conn (ph only), Donna L. Dittmann (ph, p. 18) and Steven W. Cardiff. First found by Greg Lavaty, Richard DeMay, and Matt Conn.

Kelp Gull (*Larus dominicanus*)

One adult in breeding plumage (1992-087) on 5 June 1992, *Cameron*: ca 2 mi. W old mouth Mermentau River (Rutherford Beach); John P. Sevenair, Curtis C. Sorrells, Phillip A. Wallace (ph), and Alfred E. and Gwen B. Smalley (ph, p. 18). This record was initially submitted as a Great Black-backed Gull and then as a Yellow-footed Gull, neither of which were accepted. Records certainly pertained to the same bird, which was eventually re-identified as a Kelp, circulated as such, and accepted.

One adult in breeding plumage (1992-088) on 13 June 1992, *Cameron*: ca 8 mi. W old mouth Mermentau River (Rutherford Beach); Joseph P. Kleiman. This record, originally submitted as a Lesser Black-backed Gull, was accepted as a Kelp Gull based on the description, combined with date and location, and almost certainly represented the same bird as 1992-87.

Burrowing Owl (*Athene cunicularia*)

One (2012-154) on 28 December 2012, *Catahoula*: Louisiana Delta Plantation Farm; Jonathan Clark (ph, p. 18).

One (2014-043) on 17 December 2014-11 February 2015 *Lafourche*: Fourchon Beach, 5.8 km NE Port Fourchon, N29.13349°, W90.14352°; Erik I. Johnson (ph), Dan O'Malley (ph, p. 18), and Natalie Waters.

This species was added to the Review List on 7 September 2002.

Lesser Nighthawk (*Chordeiles acutipennis*)

One male (2000-028) on 15 March 2000, *Gulf of Mexico*: 77 mi. S Pecan Island, Vermilion 265 oil platform, 28° 30' 45" N, 92° 27' 04" W; Richard L. (Rick) Knight (ph, p. 18).

One female (2012-130) on 6 April 2012, *Cameron*: Peveto Woods Sanctuary; Paul E. Conover (ph, p. 18).

One female (2014-044) on 15 April 2014, *Cameron*: Johnsons Bayou, Peveto Woods Sanctuary; Billy Jones (ph), Robert C. Dobbs (ph), Matt Brady (ph only, p. 18), Molly Richard (ph only), and Michael J. Musumeche (ph only).

One female (2014-078) on 18 & 22 April 2014, *Cameron*: Johnsons Bayou, Peveto Woods Sanctuary; Paul E. Conover (ph, p. 18).

This species was added to the Review List on 11 March 1989. See also identification review beginning p. 34.

Vaux's Swift (*Chaetura vauxi*)

At least eight (2005-041) on 21 December 2005, *East Baton Rouge*: Baton Rouge, Capitol Lakes, Erik I. Johnson (ph).

Anna's Hummingbird (*Calypte anna*)

One immature male (1996-001) from 7 January to at least 13 February 1996, *St. John the Baptist*: Reserve, 171 Cedar St.; Melvin Weber and Nancy L. Newfield (banded on 7 January, band no. T-79942, left rectrix 5 to LSUMNS).

One adult female (2007-081) from 14 December 2007-6 January 2008, *East Baton Rouge*: Baton Rouge, 1967 Tulip St.; Jeffrey W. Harris (ph) and Nancy L. Newfield (banded on 22 December, band no. N98945, left rectrix 5 to LSUMNS).

Broad-tailed Hummingbird (*Selasphorus platycercus*)

One female or immature male (1994-106) on 30 October 1994, *Cameron*: Cameron (residence of Marianna Tanner); Donna L. Dittmann and Steven W. Cardiff.

One immature male (2001-035) on 18 November 2001, *Orleans*: New Orleans, Mirabeau Gardens, David P. Muth (ph).

This species was removed from the Review List on 7 September 2002.

**Allen's Hummingbird (*Selasphorus sasin*)**

One adult female (2011-133) on 11 December 2011, *St. Tammany*: Mandeville, 19170 Antenor St., residence of Claire Thomas; Tom Trenchard (ph; banded same day by Linda Beall). Reportedly first observed by homeowner on 6 December.

One immature male (2013-063) on 5 & 9 January 2013, *East Baton Rouge*: Baton Rouge, 366 McDonald Ave; Nancy L. Newfield and Tammy Kazmierczak (ph only, left).

One adult female (2013-066) on 1 February 2013; *Lafourche*: Raceland, 120 Blouin St., home of Lisa Robichaux, N 29.7564°, W 90.6993°; Nancy L. Newfield.

This species was removed from the Review List on 15 March 2014; the LBRC solicits submission of unreviewed records from prior to that date.

Calliope Hummingbird (*Selasphorus calliope*)

One in female-type plumage (1993-083) on 15-22 December 1993, *St. Tammany*: Covington, 127 Country Club Dr.; Harvey L. Patten.

One probable female (1996-003) on 11 February 1996, *St. John the Baptist*: Reserve, 207 W. 2nd St.; Melvin Weber. This record was accepted following a Fourth Circulation Discussion Vote.

This species was removed from the Review List on 7 September 2002.

Broad-billed Hummingbird (*Cynanthus latirostris*)

One female (2010-131) on 26 November 2010 and 13 January 2011, *Tangipahoa*: Robert, Chemekette Rd., residence of Alma Chasez; Mary Mehaffey (ph). Reportedly banded by Linda Beall; reported by homeowner(?) as first arrived 7 November 2010 and last observed 2 March 2011 (*vide* Erik I. Johnson: losbird.org/11humwest/hummers_2010_2011.pdf).

Ringed Kingfisher (*Megaceryle torquata*)

One female (2014-045) from 30 October 2014-17 February 2015, *St. Martin*: Lake Martin, N 30.226339° W 91.912144°; photographed by local photographer Barry Broussard (ph, p. 1) on 30 October and 13 December 2014 and by Gary Meyers 2 November 2014, then was independently found and photographed in the same area by Robert C. Dobbs (ph, right) on 13 February 2015 and subsequently seen by many others to at least 17 February 2015; Dave Patton (ph only), B. Mac Myers III (ph only), Janine Robin, Jay V. Huner, Michael J. Musumeche, Donna L. Dittmann (ph) and Steven W. Cardiff (communicated with one of the original photographer/discoverers <Gary Meyers> while at Lake Martin on 15 February 2015), and Devin Bosler.



2014-045

Crested Caracara (*Caracara cheriway*)

One adult (2004-037) on 1 August 2004, *Calcasieu*: W. side Hwy. 14, 0.3 mi. N Hwy. 27 at Holmwood; Paul Sunby.

Two adults (2004-044) on 7 October 2004, *Calcasieu*: Vinton; Fabacher Rd. near intersection Gum Island Rd.; Justin Bosler.

Two adults (2006-024) on 4 September 2006, *Jefferson Davis*: along Hwy. 14, ca. 2 mi. E of Hwy. 99, S of Thornwell; Devin Bosler.

One adult (2006-041) on 7 December 2006, *Calcasieu*: S Holmwood, Hwy. 27 near junction with Hwy. 14; James W. Beck.

Two (2007-008) on 31 January 2007, *Vermilion*: just NE headquarters of White Lake WCA; Bob Russell.

This species was removed from the Review List on 8 September 2007.

Willow Flycatcher (*Empidonax traillii*)

Four, three singing males and one female attending a nest (2012-138), on 28 May 2012, *Bossier*: riparian area ca 0.4 mi. N East Texas Street Bridge; Jay V. Huner.

One (2013-099) on 25 May 2013, *Red River*: Red River NWR, Bayou Pierre Unit, Yates Tract; John Dillon (audio).

This species was removed from the Review List on 14 March 2015.

Say's Phoebe (*Sayornis saya*)

One (2009-107) on 19 December 2009, *Catahoula*: Louisiana Delta Plantation Farms, ca 1.5 mi. SE Dewey W. Wills WMA; Jonathan Clark.

One (2011-112) on 23 December 2011, *Jefferson Davis*: intersection of Clifton and Eugene roads; Paul E. Conover (ph, p. 19).

One (2012-119) on 22 February 2012, *Calcasieu*: intersection of Hwy. 14 and Harris Rd., ca 2 mi. W Bell City; Paul E. Conover (ph, p. 19). This is likely the same individual that returned in the fall (2012-034) and was present 23 December 2012-29 March 2013 (Dittmann 2013).

One (2014-027) on 10 January 2014, *Orleans*: New Orleans East on Lake Forest Blvd. behind abandoned nursing building; Mary Mehaffey. There was an accepted Say's Phoebe (2013-005) at this locality 27 January 2013.

One (2014-047) on 23 September 2014, *Vermilion*: Paul J. Rainey Wildlife Sanctuary headquarters; Timothy Vincent (ph, p. 19).

One (2014-075) on 21 October 2014, *St. Landry*: Church Point, vicinity of Reed Airstrip, nearest address 1698 Prudhomme Rd.; Jay V. Huner (ph, p. 19).

One (2014-048) on 25 October 2014-1 January 2015, *Cameron*: Welch Rd., S of intersection with Chalkley Rd. ranging to the Sweet Lake Land and Oil Company field office on Chalkley Rd., ca 7 mi. S Holmwood; Paul E. Conover (ph), Donna L. Dittmann (ph) and Steven W. Cardiff (ph on 20 Dec.), and Billy Jones (ph on 30 Dec. p. 19).

One (2014-070) on 31 October 2014-12 March 2015, *Jefferson Davis*: ca 1 mi. N Thornwell on Potter Rd.; Jay V. Huner (ph), Oscar Johnson (ph), Donna L. Dittmann (ph, p. 19) and Steven W. Cardiff, and Casey Wright. Reportedly found by Matt Brady.

One (2014-063) on 26 November 2014, *St. Tammany*: Slidell, behind Northshore Harbor Center, at intersection of Lakeshore Blvd. and Harbor Center Blvd.; Willie Matthews (ph, p. 19), Tom Trenchard (ph), and Claire Thomas (ph only, at right).

One (2014-049) on 14 December 2014, *Cameron*: Parish Rd. 118S, S of Lake Arthur (Klondike area); Robert C. Dobbs (ph, p. 19).

This species was removed from the Review List on 14 March 2015.

Ash-throated Flycatcher (*Myiarchus cinerascens*)

One (1993-070) on 21 December 1993, *Vermilion*: ca 2 mi. NE Mulvey; J. V. Remsen, Jr. Another Ash-throated Flycatcher found nearby (LBRC 1993-69) on the same day by same observer was previously reviewed (Eighth Report).

One (1994-056) on 26 February 1994, *Orleans*: New Orleans, Bayou Sauvage NWR along Maxent Canal near Gentilly Rd.; Ralph and Fran Cambre (card only).

This species was removed from the Review List on 7 September 1996.



2014-063

Brown-crested Flycatcher (*Myiarchus tyrannulus*)

At least one (1994-104) on 15 January 1994, *Plaquemines*: Fort Jackson Woods; Phillip A. Wallace. See also accepted record 1994-116 (Tenth Report), possibly from same locality on 22 January 1994, may pertain to same individual; also, conceivably could have been one of four specimens collected 26 January 1994 (Eighth Report) including two *M. t. magister*.

One to two apparent adults (2011-141) on 29 December 2011, *Plaquemines*: about 0.6 mi. upriver from entrance to Fort Jackson and about 0.3 mi. inland from Hwy. 23; Phillip A. Wallace (video).

One (2014-051) on 29-30 March 2014, *Plaquemines*: Port Sulphur: woodlot just SE of Dollar General store along Hwy. 23; Cameron Rutt (ph).

Great Kiskadee (*Pitangus sulfuratus*)

One (2003-042) on 27 December 2003 (New Orleans CBC), *Orleans*: New Orleans, off I-10 by swamp tours near Bayou Sauvage; Rosemary Seidler (ph).

Two (2006-037) on 17 November 2006, *Vermilion*: N edge White Lake WCA; Erik I. Johnson.

One (2008-068) on 13 April 2008, *Cameron*: Hwy. 82, just E Sabine Pass; Jonathan L. Dunn.

One (2012-153) on 27 December 2012; *Vermilion*: White Lake WCA, White Lake Lodge; J. V. Remsen.

One (2013-065) on 31 January 2013; *Cameron*: E. end Nunez Rd. off of Montie Rd., ca 8 mi. E Grand Chenier on Hwy. 82, N 29. 740267°; W 92.843817°; Walker Wilson (ph).

One (2013-067) on 4-5 February 2013, *Calcasieu*: Sulphur, Hidden Ponds RV Park, 1201 Ravia Rd. and adjacent neighborhood; Joseph Zygalia.

One (2013-076) on 25 April and 1 May 2013, *Cameron*: Johnsons Bayou; Will Lewis.

One (2014-019) on 19 February 2014, *Cameron*: 100 m E intersection of Hwy. 82 and Parish Rd. 140 (2B Rd.), ca 2 mi. E Rockefeller Refuge HQ; Dan O'Malley (ph, upper right).

One (2014-050) on 22 April 2014, *Cameron*: Lighthouse Road Woods, E. side of Sabine Pass, W Johnsons Bayou and S Hwy. 82; Paul E. Conover (ph lower right).

**Sulphur-bellied Flycatcher (*Myiodynastes luteiventris*)**

One (2004-039) on 9 September 2004, *Cameron*: ca 2 mi. E Rutherford Beach community; Robert C. Dobbs.

One (2004-040) on 30 September 2004, *Plaquemines*: sandbar at mouth of North Pass, E. side of the Mississippi River, at approximate boundary between Pass A L'Outre WMA and Delta NWR, William G. Vermillion (sketch).

One probable immature (2006-028) on 10 September 2006, *Cameron*: Hackberry Ridge, ca 2 mi. WSW Johnsons Bayou School; Robert C. Dobbs.

Tropical Kingbird (*Tyrannus melancholicus*)

Three, one adult and two apparent juveniles (2011-115), on 13-18 August 2011, *Cameron*: East Jetty Woods, 1 mi. S Cameron; Gary Broussard (ph, p. 20; audio), Dave Patton (ph only), Paul E. Conover (ph), Matthew Pontiff (ph only), Thomas Finnie (ph only), Jay V. Huner (ph), and Stephan Woltmann.

One (2012-152) on 9 December 2012 and 24 February 2013, *Plaquemines*: Braithwaite at Caernarvon outfall canal; Phillip A. Wallace (video). Present for a fourth consecutive winter at this location.

Tropical/Couch's Kingbird (*Tyrannus melancholicus/couchii*)

One adult (2007-005) on 20-28 January 2007, *Vermilion*: ca 1 mi. W Andrew, near junction of Hwy. 700 and Hwy. 699; Devin Bosler, Paul E. Conover, and Dave Patton (ph only, p. 20). Originally submitted as a Couch's Kingbird.

One (2012-136) on 12 May 2012, *Cameron*: Oak Grove, Joe Rutherford Rd.; Paul E. Conover (ph, p. 20).

One (2012-146) on 14 October 2012, *Jefferson*: Grand Isle, Ludwig Ln. near pumping station; Phillip A. Wallace (ph, p. 20).

Two interacting individuals (2013-079) on 18 May 2013, *Cameron*: Lighthouse Rd., ca 10 mi. W Johnsons Bayou; Paul E. Conover (ph, p. 20).

Gray Kingbird (*Tyrannus dominicensis*)

One (2013-075) on 19 April 2013, *Jefferson*: Grand Isle, TNC Grilletta Tract; Eric Liffmann (ph, p. 20). One of three presumably different individuals at Grand Isle 13-21 April 2013; 2013-028 and 2013-024 already reviewed and accepted.

One (2014-052) on 28-29 April 2014, *Jefferson*: Grand Isle, SW Corner of TNC Grilletta Tract; Molly Richard (ph, p. 20).

One (2014-053) on 2 May 2014, *Cameron*: Grand Chenier, Hwy. 82 near Rockefeller Refuge headquarters; Robert C. Dobbs (ph, p. 20).

Bell's Vireo (*Vireo bellii*)

One (2009-009) on 14 and 17 January 2009, *Cameron*: Lacassine NWR Headquarters; Paul E. Conover (ph).

One (2009-027) on 15 February 2009, *Vermilion*: Zaunbrecher Rd., 3 mi. W Gueydan; Paul E. Conover (LSUMZ, ph).

One (2011-130) on 13 November 2011, *East Baton Rouge*: Richfield Riversilt; J. V. Remsen.

Bell's Vireo (*Vireo bellii*)-cont.

One to three, and possibly as many as five breeding individuals (2013-078) between 4 May and 14 September 2013, *Red River*: Red River NWR, Bayou Pierre Unit, Yates Tract; Terry Davis, John Dillon (on 25 May), Jay V. Huner (on 1 June), Larry Raymond (ph only on 3 August, p. 20), and Ronnie Maum (ph only on 7 September).

This species was added to the Review List on 18 May 1991 and was removed from the Review List on 14 March 2015.

Yellow-green Vireo (*Vireo flavoviridis*)

One (2000-032) on 7 May 2000, *Cameron*: Johnsons Bayou, Peveto Woods Sanctuary; Sidney A. Gauthreaux, Jr.

One (2007-084) on 28 September 2007, *Cameron*: Willow Island, ca 6 mi. E Cameron; B. Mac Myers III, Donna L.

Dittmann and **Steven W. Cardiff**.

Black-whiskered Vireo (*Vireo altiloquus*)

One (2006-007) on 29 April 2006, *Jefferson*: Grand Isle, TNC Landry-LeBlanc Tract; Justin Bosler.

One (2008-031) on 5 April 2008, *Jefferson*: Grand Isle, TNC Landry-LeBlanc Tract; Devin Bosler.

One (2009-110) on 19 April 2009, *Jefferson*: Grand Isle, TNC Landry-LeBlanc Tract; Edward J. Raynor.

One (2012-134) on 3 May 2012, *Jefferson*: Grand Isle, TNC Landry-LeBlanc Tract; Dan O'Malley (ph, p. 20).

One (2013-074) on 13 April 2013, *Jefferson*: Grand Isle, TNC Grilletta Tract; Phillip A. Wallace (ph, p. 20).

One (2014-057) on 6 April 2014, *Jefferson*: Grand Isle, N. end Landry Ln.; Phillip A. Wallace (ph, p. 20).

Cave Swallow (*Petrochelidon fulva*)

One adult (2006-029) on 21 October 2006, *Jefferson Davis*: ca 2 mi. SW Thornwell, near intersection of Cherokee Rd. and Hwy. 99; Paul E. Conover.

One (2008-069) on 13 April 2008, *Cameron*: Hwy. 82, ca 1 mi. E of Texas border (Sabine Pass); Jonathan L. Dunn.

One (2009-018) on 2 March 2009, *St. Tammany*: Fountainebleau SP, vicinity of bathhouse; Justin Bosler (ph).

One (2010-004) on 5 January 2010, *Cameron*: Hwy. 27 at S. side of Gibbstown Bridge; Justin Bosler.

This species was removed from the Review List on 12 March 2011.

Mountain Bluebird (*Sialia currucoides*)

One female (2014-058) on 14 December 2014-19 February 2015, *Washington*: CC Rd., 1/4 mi. S intersection with Bethel Rd. (SW of Franklinton); Janine Robin (ph), Tom Trenchard (ph at right on 17 December 2014), Claire Thomas (ph), Jay V. Huner (ph), and Oscar Johnson.

Townsend's Solitaire (*Myadestes townsendi*)

One (2007-059) on 28 October 2007, *Cameron*: Willow Island, ca 6 mi. E Cameron; Steven W. Cardiff.

This becomes the second accepted state occurrence.

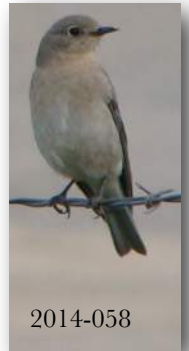
Chestnut-collared Longspur (*Calcarius ornatus*)

Three, including one in non-breeding plumage (2007-065), on 10 November 2007, *Caddo*: sod farm on Sentell Rd., N of Shreveport; Charles E. Lyon. This becomes the seventh accepted state occurrence.

Smith's Longspur (*Calcarius pictus*)

As many as ten, including three or more males, and 34, including 8-10 males (2011-142) respectively on 18 December 2011 and 11 February 2012, *Caddo*: Shreveport, Shreveport Municipal Airport; Terry Davis (ph) and Larry Raymond (ph only on 11 February 2012, below).

Fourteen in non-breeding plumage (2013-064) on 26 January 2013; *Caddo*: Shreveport, Shreveport Municipal Airport; James Holmes, Jr. and Jay V. Huner. Trip in association with LOS Winter Meeting.



2014-058

2011-142



Louisiana's Third Lucy's Warbler

Excellent photographs by J. V. Remsen of Louisiana's third accepted occurrence of Lucy's Warbler (2014-054), taken during its discovery at Grand Isle on 5 November 2014. The previous occurrences are from Plaquemines Parish, 30 December 1959, and from Cameron Parish, 25 November-17 December 1989.



Lucy's Warbler (*Vermivora luciae*)

One male (2014-054) on 5 November 2014-6 March 2015, *Jefferson*: Grand Isle, vicinity N. side TNC Grilletta Tract and ranging E as far as N. edge TNC Landry-LeBlanc Tract; **J. V. Remsen** (ph, including photos above), Erik I. Johnson (ph), Mary Mehaffey, Jay V. Huner, Oscar Johnson (ph), Donna L. Dittmann (ph) and Steven W. Cardiff, Devin Bosler, and Casey Wright. This is the third Louisiana occurrence.

Connecticut Warbler (*Oporornis agilis*)

One adult female specimen (2014-077) on 19 May 2014, *Gulf of Mexico*: ca 52 mi. SE South Pass Mississippi River, N 28.71919° W 88.346995°; Gene Revelas (LSUMZ, ph, p. 20), Nick Osman (ph only), and Donna L. Dittmann (DLD 10774). Bird was observed aboard ship MV *Irish* and subsequently succumbed later the same day. This represents the fifth accepted Louisiana occurrence and the first specimen.

MacGillivray's Warbler (*Geothlypis tolmiei*)

One second-year male (2014-055) netted and banded on 29 April 2014, *Cameron*: Johnsons Bayou; Will Lewis (ph, p. 20).



Tropical Parula (*Parula pitiayumi*)

One (2007-089) on 27 December 2007-1 January 2008, *Lafayette*: ca 3.2 km N Milton; Erik I. Johnson (ph) and Dave Patton (ph only, left).

Black-throated Gray Warbler (*Setophaga nigrescens*)

One immature male (2015-003) from 4 January-11 March 2015, *Orleans*: New Orleans, City Park, vicinity Roosevelt Mall Dr.; Janine Robin, Tom Trenchard (ph, p. 20), and Oscar Johnson (ph).

Townsend's Warbler (*Setophaga townsendi*)

One adult female or immature male (2012-144) on 1 October 2012, *Cameron*: Peveto Woods Sanctuary; B. Mac Myers III.

One male (2014-056) on 15 May 2014, *Jefferson*: Grand Isle, TNC Landry-LeBlanc Tract; Cameron Rutt and John C. Mittermeier (ph only, p. 20).

Green-tailed Towhee (*Pipilo chlorurus*)

One (2009-025) on 16 February 2009, *Terrebonne*: Mandalay NWR nature trail; Judy Quinalty (ph only right).

One (2011-135) on 18 December 2011, *Calcasieu*: Hwy. 397, 1.1 mi. W Hwy. 27, 13 mi. SSE Lake Charles; Erik I. Johnson.

One (2011-139) on 28 December 2011, *Vermilion*: Euphemon Rd., 5.7 mi. WSW Kaplan; Erik I. Johnson (ph, p. 21).

One (2011-143) on 28 December 2011, *Vermilion*: Joe Rd., 6.5 mi. SW Kaplan; Erik I. Johnson.

One (2012-157; presumably the same individual) on 2 & 19 January 2012, *Bossier*: 0.7 mi. S lock and dam #5 on Red River near Ninock; Terry Davis.

One (2012-104) on 5 January 2012, *Cameron*: Little Chenier Rd., 4.7 mi. NE Creole; Erik I. Johnson (ph, p. 21).

One (2012-106) on 16 January 2012, *Cameron*: Broussard Beach Rd., 2.9 mi. ESE Cameron; Erik I. Johnson (ph, p. 21).

One (2012-156) on 16 January 2012, *Cameron*: Johnsons Bayou, behind the library at 4586 Gulf Beach Highway; David J.

Ringer.



Photo showcase I: Ducks



2014-029

This male Eurasian Wigeon (2014-029, left) at Cameron Prairie NWR's Pintail Loop was photographed by Billy Jones on 30 December 2014.



2009-023

These Cinnamon Teal (2009-023, above right), including LA's first well-documented female, were along the Cheneyville-Echo Rd., 17 March 2009 (photo by Jim E. Johnson).

This male Cinnamon Teal (2010-050, below) was at Lacassine NWR's Pool Unit, 12 December 2010 (photo by Dennis K. Demcheck).



2010-050

These two male Cinnamon Teal were in the same general area on consecutive days: LBRC 2012-121 (right, bird on right), about 3 mi. N Kaplan, 6 March 2012; and LBRC 2012-122 (lower right, center bird) about 6 mi. SE of Crowley, 7 March 2012 (photos by Paul E. Conover).



2012-121



2012-122



2014-067

Additional male Cinnamon Teal were well-documented at Cameron Prairie NWR, 22 March 2014 (2014-067, left; photo by Robert C. Dobbs), and at the more unusual location of Grand Isle, 13 April 2013 (2013-070, right; photo by Dan O'Malley).



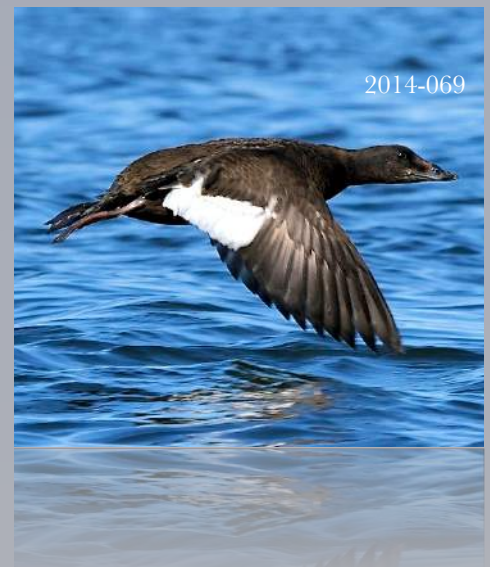
2013-070



2014-068

Female White-winged Scoter (2014-068, right) in flight at Lake Martin, 10 February 2014 (photo by Gary Meyers).

This female White-winged Scoter (2014-069, left with scaup) on the Red River N of Lock and Dam No. 3 was photographed by Florinus Kooyman on 5 December 2014.



2014-069



2014-073

This relatively cooperative Long-tailed Duck (2014-073, left) visited Lake D'Arbonne 29 January-3 February (here) 2014 (photo by Glenn Golson, Jr.).

A less cooperative female Long-tailed Duck (2012-124; lower right) offshore near Peveto Woods Sanctuary, 24 March 2012 (photo by Erik I. Johnson), is difficult to identify with confidence from the photo, but, fortunately, the photo was reinforced by written details!



An excellent comparison between a female Common Merganser (2015-001, right, right hand bird) and a Red-breasted Merganser (left bird) on Lake Pontchartrain, 15 February 2015 (photo by Phillip A. Wallace).



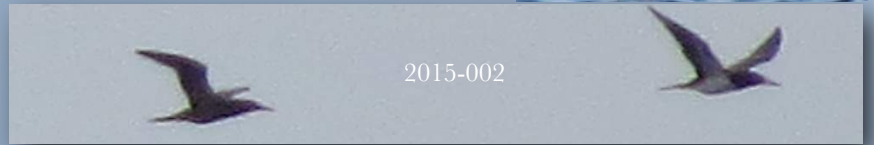
Common Merganser
Haynes Blvd
2/15/2015 11:33:59 AM

2015-001

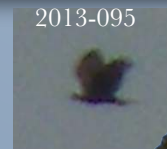
Photo showcase 2: Grebes to Ruff

Shown at right are two of four Brown Boobies (2015-002; immature on left, adult on right) on Lake Pontchartrain, 1 January 2015 (photo by Lizette Wroten).

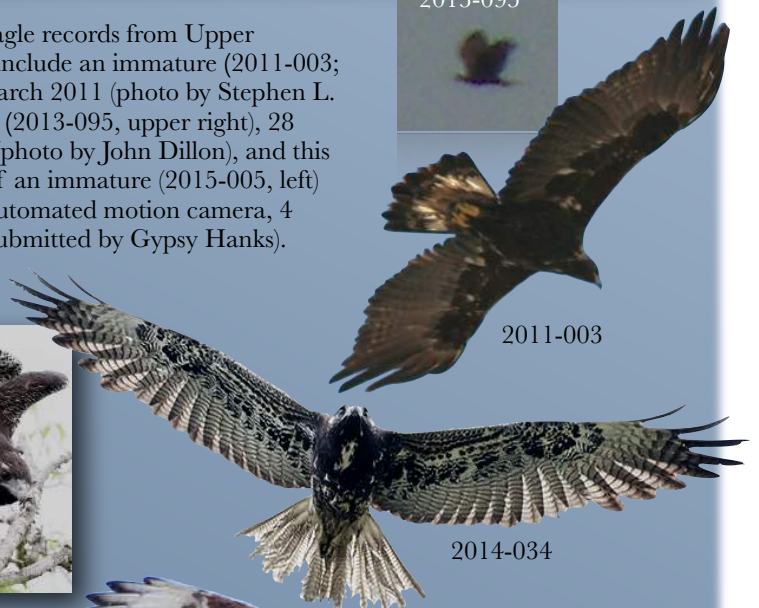
Immature Red-necked Grebe (2014-036, right) at Lake D'Arbonne, 2 November 2014 (photo by Willie Matthews).



Three Golden Eagle records from Upper Ouachita NWR include an immature (2011-003; lower right), 1 March 2011 (photo by Stephen L. Pagans), an adult (2013-095, upper right), 28 December 2013 (photo by John Dillon), and this amazing photo of an immature (2015-005, left) captured by an automated motion camera, 4 February 2015 (submitted by Gypsy Hanks).



These fantastic images (right) of an immature White-tailed Hawk (2014-034) were obtained by Matthew Pontiff in Cameron Parish, 25 April 2014.



Louisiana's first dark-morph Ferruginous Hawk (2014-033), an adult, was initially found near Thornwell (e.g., flight photo, far right, by Dave Patton, 14 December 2014), then was subsequently rediscovered at Cameron Prairie NWR, where it became much more cooperative (e.g., close-up near right by Tom Finnie, 1 January 2015); both images show the extended gape typical of this species. Good series of photos from different observers allowed confirmation that the same bird was involved at both locations.



Female Ruff in non-breeding plumage (2013-100; above left, right hand bird) SW of Thornwell, 22 September 2013 (photo by Donna L. Dittmann); note size compared to Stilt Sandpiper on left. About a year later on 27 September 2014, a similarly plumaged individual (2014-037; above right) was found about 2 mi. NE of Welsh (photo by Paul E. Conover).

Photo showcase 3: Phalaropes to Glaucous Gull



2014-074

At left, an immature Red-necked Phalarope (2014-074) at Denham Springs Wastewater Department, 9 October 2014 (photo by Matt Brady), was just the second well-documented inland occurrence for Louisiana.



2011-121

This obliging dark Juvenal-plumaged Parasitic Jaeger (2011-121; upper right) was in the vicinity of the Mississippi Canyon in the Gulf of Mexico, 25 September 2011 (photo by Dave Patton).



2007-044

Left circle image is a video grab by Justin Bosler of an immature Black-legged Kittiwake (2007-044) at East Jetty Beach, 29 April 2007. At right, a worn adult Black-legged Kittiwake in non-breeding plumage (2014-076) at Rutherford Beach on 22 April 2014 (photo by Molly Richard).



2014-076



2014-042

Kevin Morgan was able to document another Spring 2014 Black-legged Kittiwake (2014-042; immature in flight, left) at Holly Beach, 26 April.



2009-017

Above, a first-year immature Thayer's Gull (2009-017) at the Jefferson Davis Parish Landfill, 28 February 2009 (photo by Devin Bosler).

Upper right, a second-year California Gull (2013-084) at Holly Beach, 11 October 2013 (photo by David P. Muth). This third-winter/adult California Gull (2014-018; lower right) at the East Baton Rouge Parish landfill, 6 March 2014, was a parish first (photo by Daniel F. Lane).



2013-084



2014-038

Always a great find in Louisiana, this immature Little Gull (2014-038; left and inset below right) W of Holly Beach, 5 April 2014 (photo by Paul E. Conover), becomes the 10th accepted state occurrence.



2014-038



2013-068

Although Glaucous Gull is on the threshold for potential removal from the Review List, there are only five accepted occurrences herein, only two of which are from 2014. Those accompanied by supporting photographs included (all first-year immatures): one (2013-088; bottom left) near the mouth of the Calcasieu River, 30 November 2013 (photo by Paul E. Conover); two records from Elmer's Island, both photographed by Erik I. Johnson (2013-068, above) on 20 March 2013 and (2013-090, upper right), 4 December 2013; one (2014-039; middle right) at Venice, 12 April 2014 (photo by Cameron Rutt); and one (2014-040; lower right) at Holly Beach, 26 April 2014 (photo by Mary Mehaffey).



2014-018



2013-090



2014-039



2013-088



2014-040

Photo showcase 4: Gulls (end) through Lesser Nighthawk



2007-020

Several accepted Great Black-backed Gulls included this first-year immature (2007-020; above left) at Grand Isle, 24 February 2007 (photo by Justin Bosler).



2009-014

Above-center, an adult Great Black-backed Gull (2009-014) on Timbalier Island, 3 February 2009 (photo by B. Mac Myers III).

First-year Great Black-backed Gull (2014-041; top right plus circle inset) at Grand Isle State Park, 13 April 2014 (photos by Dan O'Malley). Immatures (2014-071) at Elmer's Island, 8 October 2014 (near right; photo by Matt Conn), 14 January 2015 (opposite left), and 9 February 2015 (opposite far right; last two photos by Donna L. Dittmann) were confirmed as the same individual present for an extended period by comparison of the primary pattern (small white spot on P10).

This adult Kelp Gull (1992-087; collage, right) at Rutherford Beach, 5 June 1992, is the only accepted onshore occurrence for Louisiana away from the Chandeleur Islands (photos by Gwen B. Smalley); no Kelp Gulls have been documented in the state since 2000.



2014-041



2014-071



2014-071



2014-071



1992-087



2012-154

Two well-documented Burrowing Owls included one (2012-154; left) at Louisiana Delta Plantation Farm, 28 December 2012 (photo by Jonathan Clark), and, more recently (2014-043; circle, right), one at Fourchon Beach, 17 December 2014 (photo by Erik I. Johnson).



2014-043



2014-044

Identification of Lesser Nighthawk can be difficult and is an under-appreciated identification challenge (see p. 34). Lesser can occur much earlier in spring than Common Nighthawk, as was the case for this male Lesser (2000-028, right) well-offshore at the Vermilion 265 oil platform, 15 March 2000 (photo by Richard L. "Rick" Knight), and this female (2012-130; lower right) at Peveto Woods Sanctuary, 6 April 2012 (photo by Paul E. Conover).

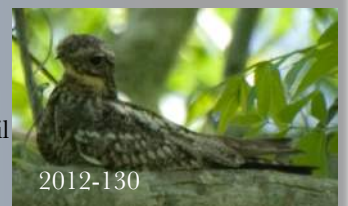


2000-028



2014-078

The excellent series of photos of "a female" Lesser Nighthawk at Peveto Woods Sanctuary in late April 2014 confirmed the presence of *two* individuals: 2014-044 (upper left) here on 15 April (photo by Matt Brady); and 2014-078 (lower left), here on 22 April (photo by Paul E. Conover).



2012-130

The LBRC regrets that only a small percentage of submitted photograph can be showcased in the Annual Newsletter and Report. Due to space limitations, photographs appearing in LBRC Newsletters are chosen by the Newsletter Editor for a variety of reasons including (and these are well-represented herein): 1) to provide an image of the individual bird(s) accepted (whether by the person who found the bird, a photo taken within the record's date range of occurrence, or from the last day the bird was observed); 2) illustrate the importance of photographic documentation; 3) show the range of photographic images submitted to the LBRC for documentation; 4) stress the importance of *all photographs* to the documentation process -whether or not completely in focus (but species still recognizable) or tack sharp. A grainy or poorly exposed photo can often be just as useful as one that is beautifully composed and professional-appearing; and finally, 5) as a means to encourage observers to carry a camera because, with practice, most observers can produce fine images of birds. And remember, even if others are photographing the same bird, their photos may not come out, be lost, or you can capture some aspect of the bird not captured by others - **always have your camera handy or you might miss that "record" shot.**

The LBRC is very appreciative of the time and effort observers have expended to submit photo and written documentation to the Committee. Please keep up the good work !

Photo showcase 5: Say's Phoebe finale showcase

Illustrated below are seven occurrences from 2014, plus single 2011 and 2012 occurrences that missed publication. The number illustrated here supports the LBRC decision to remove Say's Phoebe from the Review List (see also p. 3). Historically, Say's Phoebes were rarely encountered in Louisiana, with only ten accepted occurrences prior to 2004. From 2004 through 2014 (the last 11 years) there have been over 53 accepted occurrences, most photo-documented. It will be interesting to see whether this species continues to be an annual rare-but-expected fall-winter visitor.

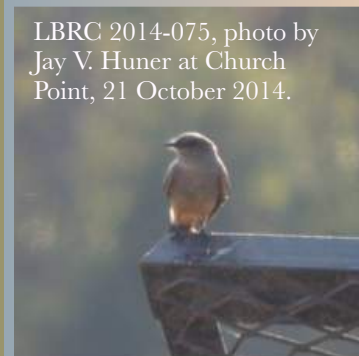


LBRC 2011-112, photo by Paul E. Conover in Jefferson Davis Parish, 23 December 2011.



LBRC 2012-119, another photo by Paul E. Conover taken about 2 mi. NW Bell City, 22 February 2012.

LBRC 2014-063 (right), photo by Willie Matthews, behind Northshore Harbor Center in Slidell, 26 November 2014.



LBRC 2014-075, photo by Jay V. Huner at Church Point, 21 October 2014.



LBRC 2014-047, photo by Timothy Vincent at Paul J. Rainey Wildlife Sanctuary headquarters, 23 September 2014.



LBRC 2014-070, photo by Donna L. Dittmann at Thornwell, 6 November 2014.



LBRC 2014-049, photo by Robert C. Dobbs taken S of Lake Arthur near Klondike, 14 December 2014.



LBRC 2014-048, photo by Billy Jones ca 7 mi. S of Holmwood, 30 December 2014.

Photo showcase 6: Kingbirds through warblers



2007-005

Four reports could not be resolved beyond “Tropical-Couch’s complex” kingbird: in Vermilion Parish, 28 January 2007 (2007-005, left, photo by Dave Patton); one (2012-136) at Oak Grove, 12 May 2012 (photo lower left by Paul E. Conover); one (2012-146, upper right) at Grand Isle, 14 October 2012 (photo Philip A. Wallace); and at Lighthouse Road, Cameron Parish, 18 May 2013 (2013-079; lower right, one of two individuals photographed by Paul E. Conover).

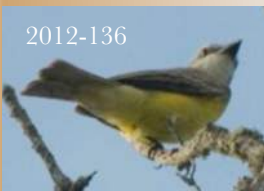


2012-146



2014-077

Top right, this female Connecticut Warbler (2014-077) was found aboard a ship 52 mi. SE South Pass Mississippi River, 19 May 2014 (photo by Gene Revelas).



2012-136



2013-079



2014-055

Above, in-hand photo by Will Lewis following the capture of this male MacGillivray’s Warbler (2014-055) at Johnsons Bayou, 29 April 2014.



Photo by Gary Broussard shows one of two juveniles (left) and an adult (right) Tropical Kingbirds (2011-115) near Cameron, 13 August 2011, suggesting that successful nesting occurred nearby.



2014-056

Left, male Townsend’s Warbler (2014-056) at Grand Isle, 15 May 2014 (photo by John C. Mittermeier); first spring occurrence for SE LA.

2015-003

Three accepted occurrences of Gray Kingbird included two at Grand Isle, one (2013-075) on 19 April 2013 (photo below left by Eric Liffmann) and one (2014-052) on 28 April 2014 (photo by Molly Richard, below center), plus one (2014-053) near the Rockefeller Refuge headquarters, 2 May 2014 (below right, photo by Robert C. Dobbs).



2013-075



2014-052



2014-053



Above, immature male Black-throated Gray Warbler (2015-003) at City Park, New Orleans, 6 January 2015 (photo by Tom Trenchard).



2013-078

This Bell’s Vireo (2013-078, below, far left) was photographed by Larry Raymond at Red River NWR, 3 August 2013.



2012-134



2013-074



2014-057

There were three accepted photographic records of Black-whiskered Vireo, all from Grand Isle: LBRC 2012-134 (above center-left) was photographed by Dan O’Malley, 3 May 2012; LBRC 2013-074 on 13 April 2013 (above center-right), and LBRC 2014-057 on 6 April 2014 (above far right) were both photographed by Phillip A. Wallace.

Photo showcase 7: Sparrows through orioles



2014-059



2011-139



2012-104



2012-108



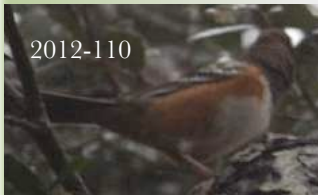
2012-106



2012-116

This female Lark Bunting (2014-059, left) discovered in Natchitoches Parish, 21 December 2014, was a first for central Louisiana (photo by Jeff Trahan).

Part of the Green-tailed Towhee invasion of winter 2011-2012 and showing the full range of quality of documentary photos, these were all photographed by Erik I. Johnson. From left to right: (2011-139) 5.7 mi. WSW of Kaplan, 28 December 2011; top (2012-104) 4.7 mi. NE Creole, 5 January 2012; bottom (2012-108) 3.7 mi. SW Welsh, 27 January 2012; (2012-106) from Broussard Beach Rd., 16 January 2012 (note that the white throat is just barely visible but nonetheless does help support identification); (2012-116) on 17 February 2012, 5.8 mi. SSW Abbeville.



2012-110



2012-111

Residual records from the great Spotted Towhee invasion of winter 2011-2012: one (2012-110; above left) at Paul J. Rainey Audubon Sanctuary, 4 February 2012 (photo by Erik I. Johnson); male (2012-111; above right) in Ouachita Parish, 5 February 2012 (photo by Stephen L. Pagans); male (2012-113; near right) at Oak Grove, 5 February 2012 (photo by David J. Ringer); one (2012-117; far upper right and barely visible) near Lake Charles, 19 February 2012 (photo by Paul E. Conover); and a male (2012-127) in Jackson Parish, 25 March 2012 (Stephen L. Pagans).



2012-113



2012-117



2012-127

This gorgeous adult male (2014-060; left) Lazuli Bunting was photographed by Cameron Rutt at Peveto Woods Sanctuary, 30 April 2014.



2014-060

This male Shiny Cowbird (2011-120; circle below right) was near Venice, 13 September 2011 (photo by Devin Bosler).



2011-120

Photographically documented Bullock's Orioles included an immature/female (2013-083, below center-left) at Harahan, 8 October 2013 (photo by Lizette Wroten), and adult males at Metairie, 12 December 2013 (2013-089; below center-right, photo by Mary Mehaffey), at Oak Grove Sanctuary, 25 April 2014 (2014-061; below far left, photo by Robert C. Dobbs), and at New Orleans, 23 February 2015 (2015-004; below far right, caught posing next to a House Finch, photo by Steve Picou).



2014-061



2013-083



2013-089



2015-004

Eighteenth Report of the LBRC: cont. from p.14: Green-tailed Towhee (*Pipilo chlorurus*)- cont.

One (2012-108) on 27 January 2012, *Jefferson Davis*: Ardoin Cove Rd., 0.45 mi. E LeBlanc Rd., 3.7 mi. SW Welsh; Erik I. Johnson (ph, p. 21).

One (2012-112) on 5-6 February 2012, *Jackson*: vicinity NE corner of parish, N 32.487694°, W 92.467583°; Stephen L. Pagans (ph).

One heard only (2012-102) on 7 February 2012, *Caddo*: Hartz Island Rd. at Gayle Levee; Terry Davis.

One (2012-116) on 17 & 19 February 2012, *Vermilion*: intersection Hwy. 690 X Hawk Rd., 5.8 mi. SSW Abbeville; Erik I. Johnson (ph, p. 21).

Spotted Towhee (*Pipilo maculatus*)

One adult male (2006-038) on 26 November 2006, *Plaquemines*: Fort Jackson woods; Robert D. Purrington.

One adult male (2009-010) on 18 January 2009, *Bossier*: Miller's Bluff, 4 mi. S Wardview near junction of Miller's Bluff and Buckshot roads; Devin Bosler (ph).

Two, male and female (2009-021) on 1 February 2009, *Bossier*: vicinity of Plain Dealing, female near 858 Bolinger Cutoff Rd. just W Hwy. 157 and ca 1 mi. E Hwy. 3, and male ca 4 mi. NNE of female's location; Terry Davis. *NOTE: In the future, the LBRC will not accept submissions for obviously separate occurrences in a single report.*

One (2009-022) on 14 February 2009, *Claiborne*: NNE of Colquitt community; Terry Davis.

One male (2011-137) on 23 December 2011, *Cameron*: woods at 2400 block of Trosclair Rd., ca 9 mi. E Cameron; Paul E. Conover.

One (2012-110) on 4 February 2012, *Vermilion*: 16.4 mi. ESE Pecan Island, Chenier au Tigre, Paul J. Rainey Audubon Sanctuary; Erik I. Johnson (ph, p. 21).

One male (2012-111) on 5 February 2012, *Ouachita*: Beulah Church Rd., ca 0.1 mi. N Hwy. 144, N 32.473250°, W 92.415194°; Stephen L. Pagans (ph, p. 21).

One (2012-113) on 5 February 2012, *Cameron*: Oak Grove, Oak Grove Sanctuary; David J. Ringer (ph, p. 21).

One (2012-114) on 11 February 2012, *West Feliciana*: W. end of paved trail associated with The Bluffs community; David J. Ringer (ph).

One (2012-117) on 19 February 2012, *Calcasieu*: intersection of Elliot and Lincoln roads, ca 5 mi. SW Lake Charles; Paul E. Conover (ph, p. 21).

One male (2012-127) on 25 March 2012, *Jackson*: Bradford Rd., N 32.486472°, W 92.464806°; Stephen L. Pagans (ph, p. 21).

This species was added to the Review List on 7 September 1996.

Lark Bunting (*Calamospiza melanocorys*)

One female (2014-059) on 21 December 2014, *Natchitoches*: Hampton St., ESE of Natchitoches, N 31.7229°, W 92.9902°; Jeff Trahan (ph, p. 21). This is the eleventh accepted state occurrence.

**Western Tanager (*Piranga ludoviciana*)**

One adult male (1999-110) on 15-25 February 1999, *East Baton Rouge*: Baton Rouge, 675 Wylie Dr.; James Burke.

One adult male (2006-008) on 3 May 2006, *Cameron*: Peveto Woods Sanctuary; Gary J. Pontiff and Matthew Pontiff (ph).

One female (2007-025) on 15 April 2007, *Orleans*: New Orleans, City Park, Couturie Forest; Robert D. Purrington.

One male (2009-011) on 24 January 2009, *Lafayette*: Hwy. 342 near intersection with Hwy. 719; Paul E. Conover and Dave Patton (ph only, above right).

One (2009-026) from 2-9 March 2009, *Jefferson*: Harahan, 7304 Stoneleigh Dr.; Cathy DiSalvo (ph, above left) and Beth Wiggins (ph only).

One female (2011-132) on 6 December 2011, *St. Tammany*: Mandeville, 19170 Antenor St.; Tom Trenchard.

One in female-type plumage (2011-136) on 21 December 2011, *Jefferson*: Grand Isle, TNC LSU Woods Tract; Erik I. Johnson.

This species was added to the Review List on 11 March 1989 and removed on 16 March 2013.

2011-126

Black-headed Grosbeak (*Pheucticus melanocephalus*)

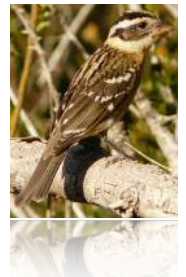
One immature male (2011-126) on 30 October 2011, *Cameron*: Johnsons Bayou, Peveto Woods Sanctuary; Rosemary Seidler (ph at right). This species was added to the Review List on 11 March 1989.

Lazuli Bunting (*Passerina amoena*)

One adult male (2014-060) on 30 April 2014, *Cameron*: Peveto Woods Sanctuary; Cameron Rutt (ph, p. 21).

Shiny Cowbird (*Molothrus bonariensis*)

One male (2011-120) on 13 September 2011, *Plaquemines*: near junction of Cypress Cove and Stone roads, ca 1/2 mi. SE Tidewater; Devin Bosler (ph, p. 21).



Bullock's Oriole (*Icterus bullockii*)

One adult male (2008-067) on 31 December 2008, *Cameron*: fragmented chenier on N. side Hwy. 82, ca 3/4 mi. W Mermentau River Bridge and ca 2 mi. W of Grand Chenier; Justin Bosler (ph).

One adult male (2011-127) on 7 November 2011, *Lafayette*: 102 Goodwood Circle, 2.4 mi. N Milton; Erik I. Johnson.

One immature/female (2013-083) on 8 October 2013, *Jefferson*: Harahan, Colonial Ln.; Lizette Wroten (ph, p. 21).

One male (2013-089) on 12 December 2013, *Jefferson*: Metairie, Lafreniere Park; Mary Mehaffey (ph, p. 21).

One adult male (2014-061) on 25 April 2014, *Cameron*: Oak Grove, Oak Grove Sanctuary; Robert C. Dobbs (ph, p. 21).

One adult male (2015-004) on 23 February 2015, *Orleans*: New Orleans, 3261 Derby Place; Steve Picou (ph, p. 21).

This species was added to the Review List on 7 September 1996.

House Finch (*Haemorhous mexicanus*)

Two adult males (1989-005) on 16 December 1989, *Terrebonne*: Thibodaux; Mitch Foret.

One heard (1989-041) on 21 December 1989, *East Baton Rouge*: Baton Rouge, LSU Campus; Kenneth V. Rosenberg (card only).

This species was accepted to the State List as an Introduced Species on 18 May 1991 and removed from the Review List.

UNACCEPTED RECORDS: IDENTIFICATION QUESTIONABLE

Each record below is accompanied by a brief explanation of why the report was not accepted. In nearly every case the primary reason is that the written documentation was ultimately considered insufficient to confirm species identification. Evaluation and interpretation of a record's written details is, of course, a balancing act and the Committee's general policy has been that if details are not adequate, are too subjective, or otherwise conflict with a correct identification, then we would prefer to err on the conservative side, which means we may possibly not accept a report that is correctly identified. For many of the records that follow, reviewing Members stated in their reviews that they believed that the observer probably did correctly identify the species, but that the written details were somehow insufficient for official acceptance. Whereas our evaluations focus on a variety of parameters (description, details of the observation, observer skill/reputation/experience, etc.) we simply cannot "fill-in missing or overlooked details," which would embellish upon a record, no matter how "unmistakable" a species may be or how well Members may know or realize an observer's skill level or reputation. Records that fall outside documented patterns of geographical and/or seasonal occurrence receive greater scrutiny. Included below are many older submissions that were backlogged in the files or awaiting a Fourth Circulation Discussion Vote.

The identification of the following 138 records was not accepted.

Canada Goose (*Branta canadensis*)

Two (2013-087) on 14 December 2013, *Jefferson Davis*: Wild Rd. Description and photographs did not exclude Cackling Goose, which is the "default" wild Canada-type goose species in SW Louisiana. In addition, confirmation as a "large" Canada Goose is a necessary starting point to debate wild versus feral status.

Tundra Swan (*Cygnus columbianus*)

One adult (1991-079) on 26 December 1991, *St. Landry*: Hwy. 49 at mile marker 42. This report was recently submitted based on memory nearly 20 years after the fact, and the observer admitted being only 90% confident of the identification. Distance made it difficult to adequately eliminate a Trumpeter Swan. For those reasons, all Committee Members believed acceptance was not warranted.

One (1994-008) on 8 February 1994, *St. Landry*: I-49 in vicinity of Lake Recreation Area, 9.3 mi. N Hwy. 103 Exit. Most Members believed that the observer probably did see this species based on probability, but that diagnostic characters were not observed, which did not allow separation from other white swan species.

Two, one adult and one immature (2009-016) on 25 January 2009, *East Carroll*: S. end of Gassoway Lake near Millikin, at junction of Delta and Levee roads. All Members agreed that the birds were swans, but the brief and distant views did not allow adequate study of important field marks. Additionally, the reporter did not consider Trumpeter Swan as a possibility, two of which occurred in the state during the same season.

Swan sp. (*Cygnus* sp.)

Two (2011-138) on 27 December 2011, *St. John the Baptist*, S of Hwy. 61, about 2 mi. NW Norco. The distance and circumstances of the observation prevented the careful study that would have been necessary to identify to species. Also, because Mute Swan or captive-origin Trumpeter Swan are possibilities and could not be excluded, the birds could not simply be accepted as "wild (presumptive Tundra or Trumpeter) swan, sp."

One subadult (2009-047) on 16 February 2009, *Vermilion*: observed from Sham's Rd. near intersection with Gladu Rd. This record went to the Discussion Round. The photos were possibly suggestive of Trumpeter Swan, but some Members were not convinced that Tundra or Mute Swan could be eliminated, and even if the bird was accepted as Trumpeter or Trumpeter/Mute swan, then there still would have been questions regarding wild origin.

Cinnamon Teal (*Anas cyanoptera*)

One adult male (2000-017) on 2 January 2000, *Bossier-Caddo-Bienville*: Bossier-Caddo-Bienville CBC. This report did not receive an accept vote following a Discussion Vote, primarily because the description was exceptionally brief and did not eliminate the possibility of a hybrid Cinnamon X Blue-winged teal.

One female (2005-039) on 7 October 2005, *East Baton Rouge*: Baton Rouge, Campus Lake on LSU campus. Members agreed that photos better supported identification as a Blue-winged Teal.

Cinnamon Teal (*Anas cyanoptera*)- cont.

One female (2008-037) on 6 April 2008, *Cameron*: Earl St., E of Cameron. Members were not convinced from the photographs and description that a Blue-winged (or a Blue-winged X Cinnamon hybrid) Teal was eliminated from consideration. This individual did not have a blank face or a noticeably large bill, and was apparently paired to a Blue-winged Teal.

Garganey (*Anas querquedula*)

One male (2009-020) on 28 April 2009, *Cameron*: E. side Arceneaux Rd., ca 0.1 mi. S intersection with Pine Pasture Rd. This would have represented a first state occurrence, but photos were not obtained and the description was relatively brief and superficial. Although the description was suggestive of this distinctive species/plumage, all Members were in agreement that the report was not adequate to add the species to the Hypothetical List.

Eurasian Wigeon (*Anas penelope*)

One male (2005-032) on 8 December 2005, *Ascension*: Crawfish Pond No. 3, Coastal Rentals, McElroy Swamp, ca 1 mi. N Hwy. 61, ca 2 mi. ESE Sorrento. Members did not believe that details provided were adequate to support the identification.

White-winged Scoter (*Melanitta fusca*)

One in female-type plumage (1989-003) on 30 December 1989, *Orleans*: New Orleans, Lake Pontchartrain. Even though an experienced observer submitted the record, the description was rudimentary and technically incorrect for this species. Specifically, the illustration exaggerated the size of the white patches on the face and wing, suggesting a partial albino Surf Scoter. This record was not accepted following a Discussion Vote.

Four (2009-024) on 28 March 2009, *Cameron*: end of Rutherford Beach Rd. The ducks were distant, and the observer's description was too vague to support the identification.

Two, one male and one female/immature (2013-097) on 31 December 2013, *St. Tammany*: Madisonville Marsh. Most members believed that the observer was likely correct. However, the circumstances of the observation and reported details were not adequate for acceptance.

Long-tailed Duck (*Clangula hyemalis*)

Two, one non-breeding plumaged male and one probable non-breeding plumaged female (2014-016) on 9 March 2014, *Sabine*: Hodges Gardens SP. This observation was based on relatively distant views without the aid of binoculars, and the observer was inexperienced with the species. For those reasons, a majority of Members believed that it was justified to not accept this report.

Red-necked Grebe (*Podiceps grisegena*)

Ten, nine immatures and one adult (2005-024), on 26 September 2005, *Caddo* and *Bossier* parishes: Red River. The description was considered marginal and, regardless, without photographic evidence, Members were unwilling to accept a report from such an early fall date and involving an unprecedented number of individuals.

One in worn breeding plumage (2014-024) on 2 February 2014, *St. Tammany*: Lacombe, canal on W. side of Lake Rd. The bird was quite possibly correctly identified because the description was suggestive and the observers reported that they were familiar with this species. However, at the time of the observation, the observers were not aware of the species' rarity on the Gulf Coast (e.g., this would represent the fifth Louisiana occurrence). Other concerns were that the description was written a year after the observation (and apparently only completed after their eBird entry was challenged), and that the bird was reportedly still in "worn breeding plumage" in February. Ultimately, a majority of Members believed that non-acceptance was warranted.

American Flamingo (*Phoenicopterus ruber*)

One (2012-142) on 1 September 2012, *St. John the Baptist*: LaPlace, Oak Shadow Court, N 30.096664°, W 90.484139°. The description was not detailed enough to convince Members that the bird could be identified to species, or that the bird was indeed a flamingo.

Yellow-nosed Albatross (*Thalassarche chlororhynchos*)

One adult (2006-034) on 21 September 2006, *Cameron*: 2 mi. W Holly Beach. Circumstances of the observation and details observed were not sufficient to document this exceptional record.

Cory's Shearwater (*Calonectris diomedea*)

One (1999-087) on 27 August 1999, *Gulf of Mexico*: 122 mi. S Morgan City, Green Canyon 18A oil platform, N 27.943611°, W 91.029167°. The bird was reported to have been over a mile away and seen only briefly, and the identification was largely based on flight style and general coloration. There was no discussion of wind conditions, which could have affected flight behavior. All Members were reluctant to accept the record because the identification was largely based on probability and other shearwater species could not be decisively eliminated.

Great Shearwater (*Puffinus gravis*)

One to three individuals (1999-091), one each on 15 August, 17 October, and 30 October 1999, *Gulf of Mexico*: 97 mi. S New Orleans, South Pass 89 B oil platform, N 28.68044°, W 89.38578°. It is highly unlikely that the same individual would have been involved in all three sightings, and the three observations probably should have been submitted as separate reports. The best description was from the 15 August sighting, but Members were concerned with potential confusion with Cory's or Cape Verde shearwaters, which were not convincingly eliminated by the details. It was also recognized that this report pre-dated the first hard-evidence occurrence, and this also contributed to some Members' reluctance to accept. Ultimately, the report was not accepted following a Discussion Vote.

Great Shearwater (*Puffinus gravis*) cont.

One (2012-141) on 30 August 2012, *St. Tammany*: Lake Pontchartrain from the Lake Pontchartrain Causeway. Most Members were unconvinced that the brevity of the observation and naked-eye views were sufficient to be certain of what would have been the first non-pelagic occurrence of this species.

Manx Shearwater (*Puffinus puffinus*)

One (2000-035) on 13 May 2000, *Gulf of Mexico*: 97 mi. S New Orleans, South Pass 89 B oil platform, N 28.68044°, W 89.38578°. This report went to Discussion and received a mixed vote, with four Members ultimately not in favor of acceptance based on concerns that the distance, brevity of the observation, and reported details did not support identification of this potential second state occurrence.

Audubon's Shearwater (*Puffinus lherminieri*)

Three (1999-093) on 4 September 1999, *Gulf of Mexico*: 61 mi. S East Timbalier Island, Ewing Bank 826 oil platform, N 28.163333°, W 90.358611° (ca 90 mi. SW Venice). Members were in general agreement that these birds were almost certainly small shearwaters, and the date is well within the established period of occurrence for Audubon's in Louisiana's offshore waters. However, the birds were distant when observed, and four Members were ultimately not convinced by the circumstances/description that other small black-and-white shearwater species (especially Manx Shearwater) were decisively eliminated, and those Members were not willing to accept based on just the probability that Audubon's is the "default" small shearwater in the Gulf of Mexico during the warm seasons.

One (2011-118) on 5 September 2011, *Jefferson*: Lake Pontchartrain. The consensus among Members was that the circumstances of the observation (brief, and from a moving vehicle) would not have allowed adequate study to be certain of the identification.

Red-billed Tropicbird (*Phaethon aethereus*)

One in Juvenal plumage (2011-117) on 3 September 2011, *Orleans*: New Orleans, Lake Pontchartrain off intersection of Canal Blvd. and Lakeshore Dr. This bird was observed briefly at relatively long distances without aid of a scope under poor viewing conditions during the passage of Tropical Storm Lee. When combined with the inexperience of the reporting observer with seabirds, and the description of the bird's behavior, most Members were reluctant to accept what would have represented Louisiana's first occurrence of a storm-blown tropicbird.

Masked Booby (*Sula dactylatra*)

One immature (1998-043) on 8 May 1998, *Gulf of Mexico*: Cameron, 61 mi. S East Timbalier Island, Ewing Banks 826 oil platform, N 28.163333°, W 90.358611°. The entire basis of the identification rested on bill color, which was a problem because there could be overlap in bill color with subadult Northern Gannets. The report was not accepted following a Discussion Vote.

One immature (1998-093) on 13 May 1998, *Gulf of Mexico*: ca 120 mi. S Cameron, Garden Banks 189 A oil platform, N 27.778611° W 93.309444°. The description was considered inadequate to support the identification.

One immature (1998-094) on 13 May 1998, *Gulf of Mexico*: ca 120 mi. S Cameron, Garden Banks 189 A oil platform, N 27.778611° W 93.309444°. Description inadequate to support identification.

One adult (1998-096) on 25 August 1998, *Gulf of Mexico*: ca 120 mi. S Cameron, Garden Banks 189 A oil platform, N 27.778611° W 93.309444°. Description inadequate to support identification.

One adult (1998-098) on 5 September 1998, *Gulf of Mexico*: ca 120 mi. S Cameron, Garden Banks 189 A oil platform, N 27.778611° W 93.309444°. Description inadequate to support identification.

One adult (1998-099) on 7 September 1998, *Gulf of Mexico*: ca 120 mi. S Cameron, Garden Banks 189 A oil platform, N 27.778611° W 93.309444°. Description inadequate to support identification.

Northern Goshawk (*Accipiter gentilis*)

One adult (2007-007) on 5 February 2007, *Caddo*: Shreveport, 410 Kay Ln. This was a difficult report because it involved a tame adult bird in an urban area, reportedly seen at fairly close range (but without binoculars). Most Members had concerns about accepting the report, with some uneasy about the bird's identification, and others accepting the identification but questioning its wild origin (i.e., Northern Goshawks are flown by falconers). With only two supporting votes after the Second Circulation, the report was not accepted.

White-tailed Hawk (*Buteo albicaudatus*)

One immature (2013-085) on 19 October 2013, *Cameron*: Hwy. 82, 200 m W mile marker 20. The observer did not provide enough detail to eliminate a Red-tailed Hawk.

Zone-tailed Hawk (*Buteo albonotatus*)

One immature (2012-147) on 28 October 2012, *Orleans*: New Orleans, Bayou Sauvage NWR, Recovery Rd. A potential second state occurrence, but hard-evidence was lacking and the description did not decisively exclude superficially similar species.

Golden Eagle (*Aquila chrysaetos*)

One (1993-047) on 3 March 1993, *East Feliciana*: N of Clinton, W of Hwy. 67 (card only). Although the nape was described as golden and the raptor's size as large, most Members did not consider the details provided on the card as adequate to support the identification.

Yellow Rail (*Coturnicops noveboracensis*)

One adult (1993-015) on 18 December 1993, *Cameron*: Holly Beach at North Mud Pass Rd. (card only). Most Members agreed that the very brief description did not satisfactorily eliminate Sora.

Black Rail (*Laterallus jamaicensis*)

One (1987-002) on 20 December 1987, *Cameron*: Magnolia Road Area (Sabine NWR CBC) on Texaco Rd. A brief observation in the headlights of a vehicle did not convince Members that other species were adequately eliminated from consideration.

One (2013-071) on 4 April 2013, *Jefferson*: Grand Isle, Humble Rd. (Exxon Fields). The report involved a brief sighting of a bird in flight. Most Members believed that the observation was too brief and that details provided were not adequate to accept this report.

One (2013-072) on 6 April 2013, *Jefferson*: Grand Isle, Humble Rd. (Exxon Fields). This was also a brief observation of a flushed bird. Although at more or less the same location as 2013-071, Members were reluctant to consider these two reports as “reinforcing” each other, and the report was ultimately considered unaccepted.

One (2013-077) on 26 April 2013, *Cameron*: Rutherford Beach Rd. Identification was based on hearing a single song. Most Members believed that more than one vocalization (and preferably recordings thereof) would have been necessary to confirm the presence of a Black Rail.

One heard (2013-086) on 22 November 2013, *Ascension*: ca 1 mi. NW intersection Motavit Rd. and Hwy. 61. The bird was heard-only giving a “growl call.” The location, date, description of the call, and the observer’s inexperience with the species were all factors in the non-acceptance of the report.

Ruff (*Calidris pugnax*)

One adult male molting from breeding to non-breeding plumage (2006-009) on 22 July 2006, *Iberville*: Sherburne WMA, South Farm. The description did not adequately describe this species.

Red-necked Phalarope (*Phalaropus lobatus*)

Two in non-breeding plumage (2006-031) on 10 October 2006, *Gulf of Mexico*: Green Canyon Block 610, N 27.943611°, W 92.029167°. Photos submitted appeared to show Juvenal plumaged Sanderlings.

One adult in non-breeding plumage (2008-032) on 25 April 2008, *Jefferson Davis*: Hwy. 101, ca 4 mi. N Hwy. 14 at Hayes. The description did not include very much detail on the shorebird’s relative size, shape, bill proportions, and details of the bird’s behavior also did not seem to reflect what is typical for this species. These concerns plus the fact that the bird was in winter plumage in late April and found at an inland location, raised enough doubt to result in non-acceptance of the report.

Parasitic Jaeger (*Stercorarius parasiticus*)

One dark morph (2006-042) on 3 December 2006, *Cameron*: East Jetty Beach. The bird was very distant and therefore Members believed that critical details could not be observed to confirm identification, especially of a rare dark morph individual.

Long-tailed Jaeger (*Stercorarius longicaudus*)

One in Juvenal plumage (1992-079) on 27 August 1992, *Iberville*: 3.7 mi. N St. Gabriel, 545 Pecan Dr. This bird was seen the day after Hurricane Andrew made landfall in Louisiana. Although the description was fairly convincing for this species, the observation was very brief. Given the difficulty of immature jaeger identification, and in the absence of hard-evidence for what would have been just the third Louisiana occurrence (and first from fall and from inland), nearly all Members agreed that this observation was best left as “jaeger sp.”

One Juvenal plumaged dark morph (1996-088) on 25 August 1996, *Washington*: 8 mi. W Bush on Bogue Chitto River. This observation was not associated with tropical weather and the bird was observed soaring above the forest. These aspects of the report, plus a generally unconvincing description and lack of hard-evidence, all contributed toward the final decision not to accept.

California Gull (*Larus californicus*)

One in Juvenal plumage (2004-046) on 30 October 2004, *Cameron*: Broussard Beach. Photos did not support identification as this species.

One adult in non-breeding plumage (2006-003) on 18 February 2006, *Orleans*: New Orleans, Lake Ponchartrain shoreline on Hayne Blvd., ca 3 mi. E New Orleans Lakefront airport. Description was not adequate to support identification.

One adult (2008-053) on 20 February 2008, *Vermilion*: 5.3 km N Abbeville on Hwy. 167. All but two Members ultimately decided that the description (leg color not seen) and accompanying photographs did not support the identification as an adult California Gull and convincingly eliminate a third-winter Herring Gull.

Thayer’s Gull (*Larus thayeri*)

One first-year immature (1988-029) on 12 November 1988, *Cameron*: ca 2 mi. W old mouth Mermentau River (Rutherford Beach). Considering the complex taxonomic and identification issues associated with Thayer’s Gull, the description of this bird was actually fairly suggestive. However, most Members eventually concluded that there was simply not enough detail to be certain of the identification and that more substantial documentation would have been necessary to support the identification and eliminate similar species or hybrids.

One first-year immature (1989-010) on 16 December 1989, *Cameron*: Hackberry. The description was superficially suggestive of this species, but not detailed enough to confirm the identification.

Thayer's Gull (*Larus thayeri*) - cont.

One first-year immature (2012-128) on 25 March 2012, *Cameron*: Cameron, Calcasieu Ship Channel. A series of photographs accompanied the report, and most Members generally agreed they were suggestive of a Thayer's Gull. However, some of the characters observed in the photos, including a proportionately large bill and a hint of a pale inner primary "flash" did not support a 'classic' Thayer's Gull and hinted at mixed parentage involving Herring Gull. Also of concern was that there were no photos that showed the bird standing in profile or from the back, and that some Members interpreted the bird's general body plumage pattern and coloration as more suggestive of a Herring. The report was ultimately not accepted. See also: <http://www.losbird.org/lbrc/LBRC%20Newsletter%202014.pdf>.

Lesser Black-backed Gull (*Larus fuscus*)

One subadult/third-summer (1987-032) on 21 June 1987, *Lafourche*: Fourchon Beach. This species is now regular almost year-round, but at the time of this observation there were still few well-documented summer occurrences. The description was rudimentary, the reporting observer was uncertain of the bird's age, and was not 100% confident of the identification. These deficiencies resulted in a majority of Members voting to not accept this report.

One (1988-026) on 26 December 1988, *Orleans*: New Orleans, Lake Pontchartrain, South Shore Marina. All Members agreed that the scanty details submitted on a 3 x 5 card by only one of the four observers did not warrant acceptance of this potential eighth state occurrence and first for the New Orleans CBC.

Four, two adults, one subadult, and one immature (1995-104), on 28 October 1995, *Cameron*: Rutherford Beach. This report included a very brief description of the adult birds but no description of the non-adults. During a Discussion Vote, all Members agreed to merge the two adults with a previously accepted record (LBRC 1995-085), which included several birds well-documented during an LOS weekend. Members also agreed to not accept the non-adults because they were not described.

One adult in definitive non-breeding plumage (1995-158) on 19 December 1995, *East Baton Rouge*: Baton Rouge, LSU Ben Hur Farm, E. side of Ben Hur Rd. between Nicholson Dr. and River Rd. Whereas the identification may likely have been correct, the observer was generally inexperienced with gull identification, the description was relatively superficial, and there were no photos. Also, this would have represented a first occurrence for the Baton Rouge area. Ultimately, the report went to a Discussion Vote and these concerns were enough to result in non-acceptance. This species was removed from the Review List on 7 September 1996.

Glaucous Gull (*Larus hyperboreus*)

One immature (2012-126) on 24 March 2012, *Cameron*: East Jetty Beach, 1 mi. S Cameron. Possibly correctly identified, but photographs and the description did not adequately rule-out other species. Close examination of photographs indicated that this was not one of the two accepted individuals present in the vicinity around the same time.

One immature (2012-133) on 27 April 2012; *Cameron*: Cameron, East Jetty Park. Despite there being a Glaucous Gull reported in the vicinity around the time of this observation and that this could have potentially been the same individual, unfortunately the description and photographs were not adequate for elimination of a very bleached or leucistic Herring Gull or hybrid.

One immature (2012-135) on 9 May 2012; *Cameron*: beach 3.3 mi. E Holly Beach. Possibly correctly identified, but distance from the bird and the relatively superficial description did not provide enough support to eliminate other species.

One second-winter (2014-025) on 13 February 2014, *Vermilion*: just N of SW Pass in Vermilion Bay. The bird is suggestive of a Glaucous Gull, but photos only showed the bird's underside as it passed overhead, and other features could not be ascertained well-enough to rule out a hybrid or leucistic individual of another species.

Great Black-backed Gull (*Larus marinus*)

One presumed third-year (1996-049) on 19 October 1996, *Lafourche*: Fourchon Beach. Photographs submitted with this record, as well as the description by the observer, indicate that the mantle color was too pale for a pure Great Black-backed Gull and more suggestive of a Great Black-backed X Herring gull hybrid. This report was not accepted following a Discussion Vote.

One first-year immature (1998-045) on 3 April 1998, *Gulf of Mexico*: 77 mi. S Pecan Island, Vermilion 265 oil platform, N 28.5125° W 92.451111°. Most Members agreed that the long distance and brevity of the observation, combined with the observer only being 85% confident of the identification, did not warrant acceptance.

One adult in definitive non-breeding plumage (2004-045) on 7 October 2004, *Cameron*: Holly Beach, ca 2 mi. W of town of Holly Beach. Description did not eliminate other species or hybrids.

One in first-year plumage (2005-023) on 10 September 2005, *Cameron*: Cameron, East Jetty. The description was not convincing, especially considering the relatively early fall date.

One adult (2006-27) on 12 October 2006; *Red River*: Lock and Dam No. 4 - flying above the Red River near the big pond ca 0.5 mi. in from Hwy. 1. The description was considered insufficient, especially for such a far-inland sighting.

One third-year or older (2006-033) on 29 October 2006, *Lafourche*: between Fourchon Beach Rd. and Port Fourchon. The observer did not see this bird well enough for a certain identification, and the ID was largely based on the fact that one had been seen at this site recently.

One third-year (2007-023) on 6 April 2007, *Jefferson*: Grand Isle, Grand Isle SP. Most Members believed that the identification was possibly correct based on the bird's reported large size and proportions. Two Members remained unconvinced that other large, dark-backed gull species or hybrids, and especially Great Black-backed X Herring gull (which are occasionally found in the state) were adequately eliminated.

One first-winter immature (2014-026) on 9 February 2014, *Plaquemines*: Coquille Point. This individual was superficially similar to an immature Great Black-backed Gull but the photographs suggest that it was probably older (second-winter plumage) than thought at the time of the observation (first-winter). Problematic for a pure Great Black-backed Gull were the mostly dark.

Great Black-backed Gull (*Larus marinus*) - cont.

tail. (Great Black-backed tail should be white with black subterminal band), fairly pronounced pale inner primary panels on the wings, and bill proportions that seemed too small for a pure Great Black-backed. In combination, these features were more suggestive of a hybrid Great Black-backed X Herring gull, and the report was determined unacceptable

Kelp Gull (*Larus dominicanus*)

One molting adult (1996-084) on 28 April 1996, *Cameron*: Broussard Beach. This was an interesting bird, initially assumed to be the same Kelp Gull that had recently been observed at Galveston, TX and reported to have a black mantle and greenish-colored legs. However, this bird was also seen by two of the Committee Members, who reported size, leg color (grayish-ivory), and mantle color better supported identification as a Great Black-backed Gull or Great Black-backed hybrid.

Lesser Nighthawk (*Chordeiles acutipennis*)

One (2000-023) on 23 April 2000, *Gulf of Mexico*: 77 mi. S Pecan Island, Vermilion 265 oil platform, 28° 30' 45" N, 92° 27' 04" W. Most Members did not believe that the details were adequate to identify this species.

One (2011-114) on 17 July 2011, *Calcasieu*: Fabacher Road. Photographs confirmed that the bird was actually a juvenile Common Nighthawk.

One male (2013-081) on 6 October 2013, *Cameron*: Peveto Woods Sanctuary. This was a brief observation of a bird seen only in flight. The submitting observer, who is also a Committee Member and who is very experienced with the species, submitted the report primarily so that it would be archived. He ultimately voted against his own report stating that, although he believed that the identification was likely correct, he agreed with other Members that the brevity of the observation and resulting limited detail did not warrant acceptance.

Vaux's Swift (*Chaetura vauxi*)

One (2007-004) on 19 January 2007, *East Baton Rouge*: Baton Rouge, University Lake on E. Lakeshore Dr. Views were distant, and vocalizations were not heard. Although this species is generally considered the "default" winter swift species in Louisiana, a majority of Members considered the documentation too weak for the record to stand on its own and were not willing to automatically accept as Vaux's based on probability.

One (2008-065) on 15 March 2008, *East Baton Rouge*: Baton Rouge, Arsenal Park at Capitol Lake. Most Members believed that the description of this single silent swift was not adequate to eliminate an early Chimney Swift.

Anna's Hummingbird (*Calypte anna*)

One immature male (2005-033) on 13 December 2005, *Iberia*: New Iberia, 1621 Southwood Dr. The submitted descriptions did not convincingly eliminate superficially similar species.

One female (2008-066) from 9-16 October 2008, *Allen*: Kinder, 1505 Lurton Ave. All Members were in agreement that the description did not eliminate an immature male Ruby-throated Hummingbird.

Allen's Hummingbird (*Selasphorus sasin*)

One adult male (1994-073) on 5 November 1994, *Cameron*: Cameron, residence of Marianna Tanner. The description was written from memory several months after the observation, and primarily focused on that the bird had a green back, without any additional details. All Members agreed that the incomplete description and lack of hard-evidence did not allow for elimination of a relatively green-backed Rufous Hummingbird or hybrid.

Red-naped Sapsucker (*Sphyrapicus nuchalis*)

One male (2005-031) on 14 December 2005, *Acadia*: ca 5 mi. S Crowley near intersection of Arpent and Premier roads. Although photos support that this bird did have a red nape, other characters were consistent with Yellow-bellied Sapsucker or a hybrid.

Crested Caracara (*Caracara cheriway*)

One (2004-042) on 1 October 2004, *Vermilion*: end of Jean Marie Rd., S of Erath (Hwy. 14 to S on Hwy. 685 to left on Jean Marie Rd.). This report was initially submitted without a description. A description was solicited and eventually provided by the observer, but the description was exceptionally brief. Although this is a relatively easy-to-identify species that is undergoing a range expansion in SW Louisiana, in 2004 this observation was well east of where the species was "expected" at the time. Mainly because of the tardy and superficial description, the record did not receive adequate votes for acceptance during the Discussion Vote.

Prairie Falcon (*Falco mexicanus*)

One adult (2013-098) on 31 December 2013, *Natchitoches*: Powhatan area (locality missing from long form). The combination of the relatively long distance, relatively brief views, lack of photos, and only one of the two observers submitting a report compelled a majority of Members to not accept this potential second state occurrence.

Western Wood-Pewee (*Contopus sordidulus*)

One (2011-119) on 13 September 2011, *Cameron*: Peveto Woods Sanctuary. Although possibly a Western Wood-Pewee, Members were not able to adequately evaluate the bird's appearance based on only two photos, neither showing a dorsal view. It is important to note that some Eastern Wood-Pewees can appear relatively dark-plumaged and can possess dark lower mandibles.

Willow Flycatcher (*Empidonax traillii*)

One singing (2013-080) on 16 August 2013, *Ascension*: 0.5 mi. E Hwy. 61. Description of the song did not convince Members that the observer was actually hearing a singing Willow Flycatcher. Fall migrant *Empidonax* can make a wide range of non-song vocalizations that could be interpreted as the “fitz-bew” song of Willow Flycatcher. In general, there are very few well-documented Louisiana occurrences of fall migrants of this species, and fall migrants would generally not be expected to sing.

Ash-throated Flycatcher (*Myiarchus cinerascens*)

Two (1991-054) on 29 December 1991, *Plaquemines*: ¼ mi. NW Fort Jackson. This report was from a very experienced observer and included photos of one individual. However, Members were divided as to whether or not the description and photos were diagnostic for Ash-throated, and some Members were not convinced that Brown-crested Flycatcher was convincingly eliminated. Ultimately, the report was not accepted.

Brown-crested Flycatcher (*Myiarchus tyrannulus*)

One adult (1994-075) on 24 November 1994, *Vernon*: residence near DeRidder. The identification was based primarily on the perceived large size and the relative intensity of yellow on the under parts. Unfortunately, these characters are subjective and more diagnostic features such as the tail pattern or vocalizations were not described. For these reasons, Members were in agreement that acceptance was not advisable.

One (2006-043) on 16 December 2006, *St. Martin*: Henderson, Henderson Levee Rd. outside of St. Martin Land Company. This was a brief observation and identification was mainly based on perceived size and color. Diagnostic characters were not observed, which was problematic.

One (2011-140) on 29 December 2011, *Plaquemines*: big woods just downriver from Fort Jackson. Most Members believed that the photos/video better supported identification as an Ash-throated Flycatcher, or were at best equivocal.

Great Kiskadee (*Pitangus sulphuratus*)

One (2005-054) on 22 October 2005, *Ouachita*: Monroe, Black Bayou Lake NWR. The report mentioned that the same or another Great Kiskadee was present on 4 December 2005 at a residence 0.5-1 mi. from this location. Although all Members believed that a Great Kiskadee may have been seen and heard, the supporting documentation based on memory submitted 4+ years later by only one of the observers involved was not adequate to support this record for northern Louisiana.

One (2007-037) on 3 February 2007, *no parish listed*: Intracoastal waterway south of Lafayette. The observer obtained only a brief view from a moving vehicle. All Members believed that, although this species is very distinctive, better viewing conditions would have been required to be certain of the identification.

One (2011-113) on 19 April 2011, *Cameron*: Peveto Woods Sanctuary. Although quite possibly correctly identified, the observation was brief, and identification based primarily on a single call. There was no discussion by the observer arguing against the possibility that another birder (at this popular birding location) could have broadcast the call.

Two, presumably a pair (2011-155), on 19 April 2011, *Vermilion*: White Lake WCA Lodge. This observation was at a known location for the species, other observers were present, and it was obviously anticipated that a number of reports would be submitted, reinforcing a “communal” sighting. However, only this single very superficial report was received. Although the observer described glimpsing a kiskadee-like bird and hearing one call, Members were not convinced by the evidence and were concerned that, with other birders present, the reporting observer could have heard “playback.” If other observers who were present at the time come forward with additional documentation, then the LBRC can revisit this report.

One (2013-092) on 22 December 2013, *Vermilion*: White Lake WCA, NE of White Lake WCA Lodge. The report involved hearing a single call. Despite being at a known locality for this species, a majority of Members were reluctant to accept based on a single call. The LBRC stresses that it is extremely important to confirm heard-only encounters by hearing multiple/repeated vocalizations and carefully discussing how similar-sounding species, “mimics,” and human playback was eliminated from consideration.

Cassin’s Kingbird (*Tyrannus vociferans*)

One (2009-108) on 18 November 2009, *St. Mary*: Cypremort Point, Ewing Cemetery. A couple of the photographs submitted superficially suggested this species, whereas others clearly supported identification as a Western Kingbird.

Gray Kingbird (*Tyrannus dominicensis*)

One probable immature (1998-067) on 27 August 1998, *Gulf of Mexico*: 61 mi. S of East Timbalier Island, Ewing Bank 826 oil platform, N 28.163333°, W 90.356811°. Members generally agreed that the description was too brief and that the report did not adequately address elimination of similar species. It was also noted that there are very few fall occurrences for Louisiana and that hard-evidence would have been especially desirable in this case. The report was ultimately found unacceptable after a Fourth Circulation Discussion Vote.

Loggerhead Kingbird (*Tyrannus caudifasciatus*)

One immature (1999-109) on 12 September 1999, *Gulf of Mexico*: ca 120 mi. S Cameron, Garden Banks 189 A oil platform, N 27.778611°, W 93.309444°. All Members agreed that the relatively superficial description and a lack of hard-evidence were sufficient grounds for non-acceptance of this potential first state occurrence.

Bell's Vireo (*Vireo bellii*)

One adult (2004-027) on 13 July 2004, *St. Martin*: University of Louisiana at Lafayette Farm, ca 1 mi. S Hwy. 92. All Members agreed that the date and description better supported an identification as a juvenile White-eyed Vireo.

One (2005-22) on 31 August 2005, *Cameron*: ca 2.5 mi. E Cameron. Following a Discussion Vote, and despite the relatively good description, Members agreed not to accept primarily because the observer indicated he was only 95% confident of the identification.

One (2012-140) on 13 June 2012, *DeSoto*: W. side Bogle Rd., ca 0.5 mi. N of XTO Energy site. This was a "heard-only" report, but the vocalizations were not actually described. Rather, a reference was made to the bird "sounding like the recording." Also, with the popularity of broadcasting songs, there was no discussion reassuring reviewers that the observer was not hearing another birder using playback.

Plumbeous Vireo (*Vireo plumbeus*)

One first-year (2007-026) on 14 April 2007, *Jefferson*: Grand Isle, TNC Grilletta Tract. Although reported by a reliable observer, identification of vagrant "Solitary Vireos" is a serious identification challenge, especially during spring when individuals (especially first-year individuals) can be in worn/faded plumage. In this case of a potential second state (and first spring and SE Louisiana) occurrence, photos were not obtained, and the description did not convincingly eliminate a relatively dull and/or worn Blue-headed Vireo, notably the grayer Appalachian subspecies *V. solitarius alticola*.

Cassin's Vireo (*Vireo cassinii*)

One (2012-145) on 20 October 2012, *Bossier*: Red River NWR, Lake Bluff trail 0.6-0.7 mi. S headquarters unit (Bossier City). This remains a very difficult identification with many subjective pitfalls in the absence of knowing age and sex. The observer submitted a careful and detailed description but in the absence of a very detailed set of photographs, Members were unwilling to accept a single observer sight report as Louisiana's third occurrence.

One (2013-096) on 28 December 2013, *Cameron*: Peveto Woods Sanctuary. The photographs were superficially suggestive of this species. However, two characters visible in the photos seemed to better favor Blue-headed over Cassin's: 1) bright, clean white under parts contrasting with yellowish sides, and 2) a fair amount of contrast on the upper parts between the gray crown/nape and the grayish green back. Relatively fresh fall/early winter Cassin's should show more uniform grayish-green upper parts, including the nape/crown area, with little or no contrast. This represents a difficult and subjective identification that prompted most Members to adopt a conservative stance and not accept the report. There are only two accepted state occurrences, both specimens from *Cameron* in early fall.

Yellow-green Vireo (*Vireo flavoviridis*)

One or two (2000-031) on 22 July 2000, *Cameron*: Peveto Woods Sanctuary. Primary emphasis was placed on the bird's voice and behavior instead of plumage details, which were not described well-enough to support the identification. Specifically, the head pattern and extent of yellow on the under parts were not discussed in the report. All Members agreed that the report was not acceptable.

Black-whiskered Vireo (*Vireo altiloquus*)

One (1990-017) on 4 May 1990, *Cameron*: Hackberry Ridge, 2 mi. WSW Johnsons Bayou School. Although almost certainly this species, the report lacked a description and Members had no choice but to consider the report unacceptable.

One (2012-131) on 15 April 2012, *Jefferson*: Grand Isle, TNC Reserve. Most Members did not believe that the very rudimentary description adequately supported identification of this species.

Violet-green Swallow (*Tachycineta thalassina*)

One adult, probably a male (2000-020), on 26 March 2000, *Gulf of Mexico*: 77 mi. S Pecan Island, Vermilion 265 oil platform, N 28.5125°, W 92.45111°. Because of the brevity of the observation, resulting in an understandably rudimentary description, plus a lack of hard-evidence, all Members believed that it was more prudent to not accept this potential first state occurrence.

Cave Swallow (*Petrochelidon fulva*)

Two, adult and juvenile (1997-084), on 25 April 1997, *Cameron*: Sabine Pass at Louisiana-Texas line. Despite the fact that this observation occurred at a known breeding location for this species at the time, the description of the adult was relatively vague and superficial, and there was no description of the juvenile, which at that time would be very early for fledged juveniles. The record was not accepted following a Discussion Vote.

One adult (2007-040) on 11 April 2007, *Vermilion*: Agnes Plantation Rd., ca ½ mi. E intersection with Hwy. 82. The description was considered too superficial to support identification of this species and eliminate similar species or hybrids.

Connecticut Warbler (*Oporornis agilis*)

One immature (2006-025) on 16 September 2006, *Orleans*: New Orleans, City Park. The description actually eliminated this species.

MacGillivray's Warbler (*Geothlypis tolmiei*)

One adult female (1999-100) on 5 September 1999, *Gulf of Mexico*: 122 mi. S Morgan City, Green Canyon 18A oil platform, N 27.943611°, W 91.029167°. The description was quite brief, and the discussion of eliminating similar species (especially other *Geothlypis* or *Oporornis*) focused only on the white eye crescents and that the bird hopped. Additionally, the bird was silent, and the observer was relatively inexperienced with similar species. Confronted with this combination of issues, a majority of Members chose not to accept the report.

One female (2013-073) on 12 April 2013, *Cameron*: Peveto Woods Sanctuary. The observer's description was suggestive of this species, and there are a few accepted Louisiana spring occurrences. But, the brief description and lack of hard-evidence to support what would establish a new early date for the state ultimately convinced all Members to not accept the report.

Kirtland's Warbler (*Setophaga kirtlandii*)

Four (1994-079) on 12 October 1994, *St. Bernard*: State Bernard SP. All Members agreed that the description did not rule-out other superficially similar species, especially the much more likely Magnolia Warbler.

Tropical Parula (*Setophaga pitiayumi*)

One male (2013-093) on 26 December 2013 and 1 January 2014, *Cameron*: Peveto Woods Sanctuary. This bird, which otherwise was consistent with a male Tropical Parula, showed some white on the eye lids that was suggestive of hybridization with Northern Parula. Because it could be argued that the bird was not 100% Tropical Parula, a majority of Members thought it best to not accept the report. See also LBRC Newsletter 2014: <http://losbird.org/lbrc/LBRC%20Newsletter%202014.pdf>. It should be pointed out that had photos not been obtained or had the photos not showed such detail, then this bird could well have been accepted as a Tropical Parula. Because of this, the LBRC wants to stress that any suspected Tropical Parula needs to be extensively photographed in order to exclude hybrids/intergrades.

Black-throated Gray Warbler (*Setophaga nigrescens*)

One (2004-041) on 11 September 2004, *Rapides*: Boyce, 428 Hickory Hill Dr., E. side Cotile Lake. Lighting conditions during the observation were poor, the observer could not determine sex/age of the bird, and the identification was at least in part a process of elimination. These factors made Members uncomfortable with accepting the report.

Green-tailed Towhee (*Pipilo chlorurus*)

One (2011-128) on 30 October 2011, *Caddo*: Shreveport, 204 Stephenson St. This was a "heard-only" report and was based on just a single call note. All Members believed a single call inadequate to support confirmation of this species.

One (2012-105) on 14 January 2012, *Cameron*: Peveto Woods Sanctuary. Although possibly correctly identified, views were poor, the bird was not heard, and most Members believed that the very brief description did not confirm this species or eliminate a White-crowned Sparrow.

Spotted Towhee (*Pipilo maculatus*)

Two adult males (2003-047) on 14 December 2003, *Caddo*: Shreveport, Brayford Rd. off W. end of S. Lakeshore Dr. Most Members believed that the description was either not adequate for identification as a Spotted Towhee, or did not eliminate hybrid Spotted X Eastern towhee.

One male (2012-109) on 1 February 2012, *Jackson*: N of Hwy. 548, ENE of Hatham, N 32.306506°, W 92.363611°. This was another "heard-only" report. The description of the voice was unconvincing in confirming Spotted Towhee and excluding Eastern Towhee or an Eastern X Spotted towhee hybrid.

One male (2012-115) on 14-15 February 2012, *Ouachita*: ca 0.7 mi. NE Hwy. 557 and Marvin Head Rd. Photographs were included with this report, but neither the photos or supporting description were sufficient to eliminate a hybrid or abnormal Eastern Towhee.

One male (2012-120) on 26 February 2012, *Union*: intersection of DeLoutre Switch Rd. and Hwy. 33, 6 mi. SW Marion, N 32.835756°, W 92.316161°. Photographs submitted better supported an Eastern Towhee or Eastern X Spotted towhee hybrid.

American Tree Sparrow (*Spizella arborea*)

One each day (2012-149) on 23 November and 26 December 2012, *Ouachita*: Ruston, Louisiana Tech University campus, over Carson-Taylor Hall. Identification was based on single flight calls captured by an automated recording device. The sound clips were so brief/faint that they were difficult to distinguish. Although printed sonograms were provided and were suggestive, there was little analysis/discussion of the data and one sonogram also seemed close to or within the range of variation of other species (e.g., Savannah Sparrow).

Dark-eyed "Oregon" Junco (*Junco hyemalis*)

One adult male (2012-118) on 19 February 2012, *Catahoula*: entrance area of Catahoula NWR, Bushley Bayou Unit where Minnow Ponds Rd. turns off Hwy. 8. Although the bird was photographed, poor lighting made the photos difficult to interpret and most Members were not convinced that a *cismontanus*-type Slate-colored Junco could be ruled-out. Junco subspecific identification is not a trivial ID problem, even for experienced observers, and the reporting observer was inexperienced with Oregon-type juncos. There are surprisingly few well-documented occurrences of non-Slate-colored Juncos in Louisiana.

Western Tanager (*Piranga ludoviciana*)

One adult male (2005-026) on 13 October 2005, *St. Mary*: ca 2 mi. S Intracoastal Canal bridge on Cypremort Point highway. Quite possibly correctly identified, but the description was considered too superficial.

Black-headed Grosbeak (*Pheucticus melanocephalus*)

One immature male (2001-003) from 10 February-2 March 2001, *Orleans*: New Orleans, 5725 St. Anthony Ave. This report went to a Discussion Vote, with debate focusing on the rather rudimentary description. Although this report was certainly superficially very suggestive of a wintering immature male Black-headed Grosbeak, and it received some support through the first three circulations, the observer's relative inexperience, brief views of the bird, and resulting vague description ultimately convinced the entire Committee to not accept the report.

One adult male (2004-038) on 14 August 2004, *Beauregard*: Graybow Rd. at S. end of airport on SW side of DeRidder. The description was brief, but a majority of Members consistently supported the report as being sufficient to confirm such a well-marked bird as an adult male Black-headed Grosbeak, also citing the reporting observer's experience. However, other Members were not as convinced by the details and also insisted that an observation on such a dramatically record-early date should be backed by photographs. After considerable deliberation, the record was not accepted following a Discussion Vote. See also LBRC 2011-116 below.

One adult male (2011-116) on 28 August 2011, *Cameron*: Oak Grove. Reported by an experienced observer and the details are suggestive. Nevertheless, this occurrence would be almost six weeks earlier than the next-earliest well-documented Louisiana occurrences. Black-headed Grosbeaks can be on the move during August in the W. US, however acceptance of such an early report in Louisiana should be supported by photos, not just a few seconds of observation by a single observer. The majority of Members believed the circumstances did not warrant acceptance of this exceptionally early record. See also LBRC 2004-38 above. Although it is not always possible to obtain hard-evidence of rarities, the LBRC stresses that, for any exceptionally early or late (e.g., many days or weeks beyond currently accepted date ranges) sighting of either a Review List species or a more regularly occurring non-resident species, every effort should be made to obtain hard-evidence to convincingly establish dramatically new benchmark or outlier occurrences.

One immature male (2011-122) on 1 October 2011, *Orleans*: New Orleans, City Park. The brief, non-binocular observation and relatively superficial description were problematic, and immature male Rose-breasted Grosbeak was not decisively eliminated as a possibility. This would represent a relatively early occurrence for either species in southern Louisiana.

One immature male (2011-123) on 20 October 2011, *Jefferson*: Metairie, 3016 45th St. Following a Discussion Vote, the majority of Members were unable to accept this brief, non-binocular observation.

One immature male (2013-082) on 7 October 2013, *Cameron*: Oak Grove, Oak Grove Sanctuary (Rutherford Motel Woods). Most Members agreed that the brevity of the observation and rudimentary description did not warrant acceptance.

Shiny Cowbird (*Molothrus bonariensis*)

One male in breeding plumage (1999-105) on 28 April 1999, *Cameron*: Hwy. 82 ferry landing on W. side of Calcasieu River. The photos provided did not seem to exclude a first-year male Red-winged Blackbird from consideration.

Two, a male and female (2000-034), on 3 May 2000, *Jefferson*: Grand Isle. Nearly all Members believed that the description was more indicative of a Bronzed Cowbird.

One adult male (2006-006) on 30 April 2006, *Jefferson*: Grand Isle, end of SR 548 between Hector Ln. and Cemetery Ln. Most members believed that the details provided were insufficient.

One adult male (2006-048) on 23 December 2006, *Grant*: Kateland Plantation Rd, ca 0.25 mi. E intersection Hwy. 8 between Boyce and Colfax. Details were considered unconvincing, especially for an inland winter occurrence.

Bullock's Oriole (*Icterus bullockii*)

One immature male (2005-035) on 26 December 2005, *Vermilion*: Kaplan, 2000 Herpin Ave. Photographs did not support identification as this species and may better support a hybrid Bullock's X Baltimore oriole.

One female (2012-103) on 2 January 2012, *East Baton Rouge*: Baton Rouge, Bluebonnet Swamp Nature Center. Excellent photographs better supported identification as a Baltimore Oriole.

Hooded Oriole (*Icterus cucullatus*)

One immature male (1989-080) on 29 April 1989, *Cameron*: Cameron, N. side of courthouse. This bird was located several hours after another Hooded Oriole (1989-116) was reported, and this may or may not have been the bird reported earlier that day. In considering it as a separate bird/stand-alone report, most Members were unwilling to accept because the description did not convincingly eliminate Orchard Oriole.

Red Crossbill (*Loxia curvirostra*)

One (2007-009) on 6 February 2007, *Lafayette*: 2 mi. N Carencro, 1 mi. W Hwy. 182. The very rudimentary description was a sticking point for most Members, and some Members also believed that the description could pertain to a male House Finch with a deformed bill. The report was ultimately found unacceptable.

White-winged Crossbill (*Loxia leucoptera*)

Three (2006-055) on 21 January 2007, *Claiborne*: Hill Farm Research Station on Hwy. 9 near Homer. Viewing conditions were poor and photos could not be obtained. All Members were in agreement that the single description (which lacked critical details), and lack of hard-evidence did not warrant acceptance of this potential first state occurrence.

UNACCEPTED RECORDS: ORIGIN

A wild origin of the following four records is not accepted.

Cinnamon Teal (*Anas cyanoptera*)

One adult male (2014-017) on 7 March 2014, *Jefferson*: Kenner City Park. This park has a reputation as a haven for exotic waterfowl that have been released from captivity, a reputation that also taints the status of potentially wild native species that could occur at this location. In the case of this male Cinnamon Teal, most Members took a conservative approach and considered it highly likely that the bird was of captive origin. Therefore, the report was considered unacceptable on the basis of origin.

Whooping Crane (*Grus americana*)

One (2007-022) on 3 January-4 March 2007, *Tangipahoa*: dairy farm near Loranger. Initial presence and duration of bird's stay was monitored by satellite. This bird originated from the Whooping Crane Eastern Partnership and re-introduction in Wisconsin.

Indian House Crow (*Corvus splendens*)

One (2008-038) on 10-18 May 2008, *Cameron*: Hackberry Ridge, 2 mi. WSW Johnsons Bayou School. All Members believed that a captive origin was the logical explanation for this bird's presence. It was fairly tame, and the plumage also showed irregularities that could be attributed to recent captivity. See also LBRC 2004-23 below.

Pied Crow (*Corvus albus*)

One (2004-023) from 5 January to at least 10 February 2004, *Gulf of Mexico*: oil platform ca 150 mi. SE of Venice. This African species is generally resident within its native distribution. It is regularly kept in captivity (even appears on TV commercials) and the individual on the platform is much more likely to have been an escape from the pet trade rather than a naturally occurring vagrant. The photographs show various signs of captivity, including apparent cage wear on the tips of the inner secondaries, rectrices, and along the outer edges of some of the primaries, some possible missing right rectrices (in one of the flight photos), and a strangely twisted back feather. The bird was also tame. Ship assisted transport is another possibility, and some might consider this a form of natural vagrancy. But, in the cases of LBRC 2008-38 and 2004-23, ship assisted transport was impossible to determine and the Committee opted to simply consider these birds as escapes from captivity.

Corrigenda

The LBRC number of the following accepted record (Ninth Report) is changed to reflect the year of occurrence but was not reported in the Tenth Report: Rough-legged Hawk LBRC 1991-013 becomes LBRC 1990-006. The following LBRC numbers were incorrect in annual newsletter reports. The correct number follows species (incorrect number in parentheses with newsletter year it appeared): Purple Sandpiper 1974-013 (1973-13; 2008); Allen's Hummingbird 2003-046 (2003-086); Cassin's Sparrow 2008-014 (2008-22; 2008); Brown-crested Flycatcher 1967-011 (1967-06; 2009), Brown-crested Flycatcher 1967-012 (1967-07, 2009), Brown-crested Flycatcher 1961-012 (1961-06, 2009), Brown-crested Flycatcher 2008-62 (2008-68, 2009); Lesser Nighthawk 2000-099 (2000-098, 2010); Broad-billed Hummingbird 2010-052 (2010-051, 2011), Sage Thrasher 2010-033 (2010-039, 2011), Yellow-rumped "Audubon's" Warbler 2010-136 (2010-087, 2011), Western Tanager 2011-041 (2011-06), Lesser Goldfinch 2011-042 (2011-006); Great Kiskadee 2012-012 (2011-069, 2012); and White-winged Scoter 1991-078 (1991-98, 2013). The first state occurrence of Anna's Hummingbird, originally published as LBRC 1980-001 in the First Report, actually involved multiple occurrences. LBRC numbers have been modified to correct for this and for the year of occurrence. LBRC 1979-001 now refers to the accepted sight record; specimen record LSUMZ 91438 is now LBRC 1979-002, and specimen record LSUMZ 91825 becomes LBRC 1979-018.

We apologize to Michael J. Musumeche for misspelling his last name in the 2014 LBRC Newsletter.

Acknowledgments

We thank James M. Bishop, Paul E. Conover, Robert C. Dobbs, J. V. Remsen, and Curtis C. Sorrells, for reviewing earlier drafts of this report. Both current and former LBRC members would like to express their gratitude to all of the contributors listed throughout this report whose submissions (whether accepted or not) contribute to furthering the knowledge of rare birds in Louisiana.

The LBRC thanks all observers who submitted reports contained in this report and whose names appear in the species accounts, and we would also like to thank those not acknowledged in the species accounts for their contributions including outside reviewers who provided knowledge or insights that assisted the LBRC with record reviews: Lisa Appelbaum, John C. Arvin, Karl Bardon, Larry Basden, Roger Breedlove, George Broussard, Jr., Jacob Cooper, Rita Czek, Denis De Priest, Jack H. Deshotels, Paul M. Dickson, Lehman L. Ellis, Jared Feura, Carol S. Foil, Clayton W. Gilley, Catherine Graichen, John E. Hartgerink, Hubert Herve, Dwight P. Knapik, Shawn Kurtzman, David L'Hoste, Terri J. Maness, Brad Martin, Gloria McKinnon, David and Mary Moreland, Robert Morris, Marylin Morvant, Randy Myers, Mike Nelson, Judith O'Neale, Theodore A. Parker III, Gregg Recer, James Reitter, Lee and Shirley Sutton, Malcolm Mark Swan, Thomas A. Sylvest, Evan Tanner, Bill Turnbill, Richard Urbanek, Paul van Els, Ed Wallace, Richard L. West, and Jim Whelan.

In-field and photo identification primer: Common & Lesser nighthawks

Donna L. Dittmann & Steven W. Cardiff

"By reason of the complicated and almost infinite variations due to sex, age, individuals, and geographic areas, the present group is one of the most difficult of all North American birds." Harry C. Oberholser 1914. Oberholser's conclusion regarding nighthawk identification and his definitive treatment of the genus *Chordeiles* in his monograph stands the test of time and his identification characters are still relevant and highlighted below. From the perspective of the LBRC, nighthawk identification continues to pose a significant challenge both for field observers and for reviewers of their records.

Common Nighthawk

In Louisiana, Common Nighthawks (*Chordeiles minor*) begin to trickle-in during the first two weeks of April (earliest date 5 April), with the majority of birds arriving during mid-to-late April and May. Migrants heading for points north of Louisiana likely continue passing through into late May or even June (e.g., offshore records to 27 May), but they are difficult to distinguish from Louisiana breeders. The species nests in a variety of habitats from barrier island beaches to urban rooftops. The beginning of fall migration is also obscured by the presence of breeders, but probably begins by early-mid August (but earliest offshore record is 14 September), with the fall peak (often involving large flocks) occurring from mid September-early October. Most Common Nighthawks have departed the state by mid-late October, with occasional stragglers lingering into late fall and early winter. There are a few occurrences into late December, January, and February, including one well-documented overwintering individual that was monitored at Baton Rouge from 30 November 1992-13 April 1993.

C. minor chapmani



Adult plumage is beautifully cryptic: upper parts characterized by a mix of black and gray spangled with white, tan, and rust (see photo above, Port Fourchon, 29 April 2010); the underparts are barred brown and white. Adult males are distinguished from females by the combination of a prominent white throat patch, white tail band, and white under tail coverts. Adult females have reduced white or buffy throats, lack or have a very reduced white tail band, and have buffy under tail coverts. Both sexes have a white patch that crosses the outer primaries, which is most extensive in adult males. Determining a bird's relative age (adult vs. immature) can be important for field identification. Nighthawks have a fairly simple plumage progression: the downy chick molts to immature plumage (Juvenal Plumage). Compared to adults, Juvenal feathers of the upper parts are more uniform pale gray with dark

vermiculations punctuated by a dark spot or chevron with a lighter buff tip (see close-up of upper wing feathers, above left).

Most Juvenal body feathers are replaced by adult-like plumage on or near the breeding grounds within a short period during the late summer and early fall (but not remiges and <all> rectrices). On the wintering grounds, most of the remaining Juvenal body feathers, including some or all rectrices and wing coverts, are replaced. For identification purposes, however, it is important to note that during their first fall migration, some immatures can be in Juvenal plumage or transitioning to adult plumage. In transitional plumage, new dark adult contour feathers contrast with pale Juvenal feathers, especially on the crown, back, and tertials. Once a young bird replaces its Juvenal body feathers, it resembles an adult except that it retains distinctly pale-tipped Juvenal remiges (primaries and secondaries; photo right of fresh juvenile from Port Fourchon, 10 June 2013, shows pale-edged remiges), which are not replaced until the complete molt the following fall-winter. As the pale tips become progressively worn, the "juvenile wing" becomes less conspicuous. Immatures returning in spring thus have worn Juvenal remiges. Adults have one annual molt and plumage appearance does not change seasonally. The extent of secondary replacement during the second pre-basic molt is not fully resolved and individuals may have a mix of second and third generation secondaries that may be useful for aging but does not affect appearance or identification of this species.



C. minor chapmani



C. minor henryi (top)
C. m. minor (bottom)

Geographic and individual variation is pronounced. Seven subspecies breed across North America: subspecies are identified by size and plumage. Plumage variation (both sexes) involves general color and pattern of the upper parts. The two specimens (left image) illustrate dorsal variation from overall darker and less patterned (lower bird) to paler and more spangled with lighter colors (upper bird). The width and extent of dark barring on the under parts also varies in the width and spacing of the dark bars and extent

continues next page

of bars present on the belly and under tail coverts (image right). Overall coloration somewhat reflects geography (soil and vegetation) of breeding habitat and subspecies that occur where there is a greater diversity of breeding habitats show the greatest range of *individual variation*.

Louisiana's breeding subspecies is *chapmani* (photos previous page) which, like the larger northeastern *minor* (see previous page) is generally a darker-backed nighthawk with blackish ground color and less pale mottling or light spots; northwestern *hesperis* is similar to *chapmani* but browner; and western-central subspecies *henryi* (see previous page) and *howelli* are lighter, with colorful bold buff or rufous spotting; northern Great Plains *sennetti* and southwestern *aserriensis* are grayer-backed, *aserriensis* being more boldly patterned. Age differences can be profound within subspecies: Juvenal-plumaged *chapmani* (left,



lower bird) is *much* paler and grayer than adult *chapmani* (upper bird). The grayer coloration and reduced white primary patch of juvenile *chapmani* (especially females) might invite confusion with a Lesser Nighthawk. It is important to note that dorsal coloration of rusty individuals of western subspecies *henryi* can look nearly identical to or *rustier* than a Lesser Nighthawk, e.g., photo at right shows a female *henryi* between male (top) and female (bottom)

Lesser Nighthawks. All of the North American subspecies of Common Nighthawk can occur in Louisiana as migrants/vagrants.

Calls (of males) are important for identification. The most familiar is a nasal "peent." Other flight calls, such as "kū-kū" or "yap-yap" have a similar quality of the "peent" call, as do the alarm notes generally rendered as "che-wip" or "cho-ic."

Double-noted calls can invite confusion with calls of Antillean Nighthawk. The aerial courtship display of the male includes a dive followed by an explosive sound reminiscent of a bull's snort and the derivation of the name 'booming nighthawk.'



Lesser Nighthawk

Lesser Nighthawk (*C. acutipennis*) is a rare visitor to Louisiana, primarily along the western coast. In spring, the species has occurred from mid March (but only one March occurrence supported by hard-evidence) into mid-late May with most records concentrated during April. Thus, March nighthawk records likely pertain to Lesser, and anything after mid May likely pertains to Common. Interestingly, there are a few well-documented spring records from well-offshore in the Gulf of Mexico. In fall/early winter, except for three September occurrences, all records are from late October-early November with a scattering into late November-December. The species was added to the LBRC Review List on 11 March 1989 because the species' pattern of occurrence fit review list criteria and because nighthawk identification is not a

trivial matter.

Adult plumage is very similar to Common Nighthawk, cryptically colored and patterned with black and brown, highlighted by buff, white, and gray often concentrated as distinct round spots on wing coverts (see photo above from Grand Isle, 12 April 2014), and also barred below. Adult males have a white throat and wing patches; the wing patch of females is diagnostic: *buff, buff and buff-white, or buff-spotted*. Both sexes have prominent buff spotting on the primaries and secondaries interior to the patch (see spread wings next page). Like Common, the Juvenal plumage is paler and less boldly patterned on the upper parts. Juvenal body feathers are replaced during the early fall and the pale buff-tipped remiges are retained until the following summer. As with Commons, some Juvenal secondaries may be retained following the second pre-basic molt. Adults begin their complete molt earlier than Commons in late summer and usually complete before leaving the breeding grounds. Adults have one annual molt and plumage appearance does not change seasonally.

The call is *bow bow bow bow*; song a long trill, both very different from the Common Nighthawk's typical single "peent." Like Common, most vocalizations are associated with the male on the breeding grounds. Males call while in flight or perched, but in Louisiana the species is rarely heard.

Identification Basics

Whereas some Common Nighthawks are easily identified from Lessers by their darker dorsal coloration, other Commons look superficially identical to, or rustier than, a Lesser. Compared to Commons, Lessers tend to possess a more well-defined horizontal row of whitish spots on the upper wing coverts that can alert an observer that this species may be involved. Coloration of the under tail coverts can provide a quick ID- if *white* then the nighthawk is a male Common; if *buff*, then other characters

continues next page

have to be observed to determine the identification. If the wing patch is buff or buff-spotted, then it is a female Lesser (see photo at right, with buff patch visible under secondaries under the number 5). Where Common and Lesser occur together, you may have the opportunity to compare individuals. Adult Lessers look "brownier," especially in flight, an impression imparted by *underwing coloration*. Males of both species have an overall grayish tone to the upper wing coverts. However, Commons tend to have a more distinct paler gray upper wing panel than do Lessers.

Overall size is usually not helpful but the species have slightly different flight silhouettes: Common has longer and more slender wings. Timing of the complete molt is different between Common and Lesser nighthawks. Commons molt on the wintering grounds, but Lessers molt late summer through early fall prior to southbound migration. Thus, the plumage of Common is fresher in spring and more worn-looking during fall migration; Lessers are more worn in spring and, especially, summer, and then fresher-looking during fall migration. This also means that you would not expect to see a Lesser in Juvenal plumage. Note that in Louisiana, adult Commons can start primary molt prior to fall departure.

Because of their highly variable plumage, separation of Lesser from Common nighthawks often comes down to the placement and size of the white or buffy primary wing patch, amount and presence of pale spotting in the primaries, and relative length of the outer primaries.

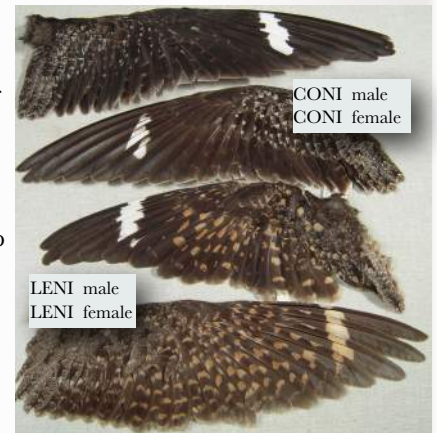
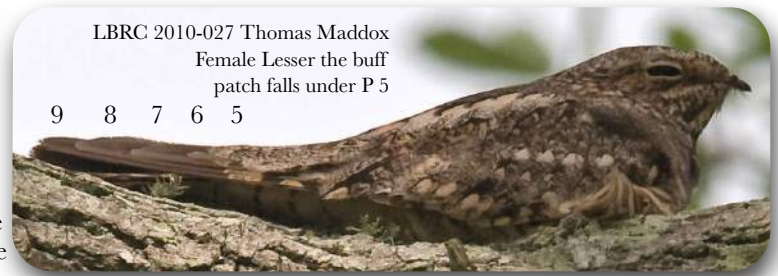
WING CHARACTERS

Shape. The relative length of the outermost primary (or P10) of nighthawk species is a helpful character: most Lessers have P10 shorter than P9 and most Commons have P10 longer than P9. If P10 is longer than P9, then the bird is a Common. However, a shorter P10 is not diagnostic for Lesser. For example, note the shorter P10 on the spread wing of a male Common (photo at right, upper wing). Nevertheless, a longer P10 makes the wing tip look more pointed (Common), and a shorter P10 gives the wing tip a more rounded shape (Lesser). Lessers also have somewhat longer secondaries, giving the wing a broader aspect (versus a narrower wing for Common), which also contributes to the more rounded-looking wing of Lesser (see spread wing of female Lesser, lowest wing at right).

Wing patch size. Male Common Nighthawks have white visible on more primaries than male Lessers, so that the patch crosses usually five rather than four primaries (note that Lessers can have white in P5 but it's usually restricted to the inner web as an isolated spot (e.g., at right, third wing from top). Commons lack or have only a restricted white spot on the outer web of P10; *if white is lacking or very reduced on the outer web of P10 then the bird is not a Lesser because Lessers always have a fairly large patch of white on the outer web of P10*. The color of the wing patch can be important, if the primary patch is buff or composed of buff spots, *then the bird is a female Lesser* (bottom wing).

Wing patch position. This is the most commonly cited field mark: patch is closer to the wing tip for Lesser, farther from the tip in Common. It is a reliable mark but can be subjective and difficult to interpret. When a bird is perched and the wing folded, then the patch may be hidden by other feathers. However, *if primaries are visible*, then the position of the light patch on the folded wing of a perched bird is a useful way to separate Lesser from Common. Regardless of the length of P10 relative to P9 (longer, shorter, or the same size),

the rest of the primaries from P9 to P1 are evenly spaced (see photo right, P10 just barely visible beyond P9). To determine location of the patch, count evenly spaced primaries backwards (thus, beginning with P9) and if the pale patch falls under/between P4 (or P3/not visible) then the nighthawk should be Common; if under P6 or P5, then it should be a Lesser. On the Common Nighthawk at right, the white patch does not fall under P5 (actually P3). Note also that there is no white on P10, another mark pointing to, in this case, a female Common Nighthawk. Counting primaries is a more reliable way to determine patch location than using where patch falls under the tertials (innermost secondaries, S10-12 because these feathers are not held as rigid as are the primaries. Another way to evaluate the placement of the patch is the distance from the tip of the primary coverts to the white patch on P10 (or P9) as highlighted by Pyle (1997). This distance is short (0 to 12 mm) and the coverts often actually touch or fall under the patch on Common Nighthawks, whereas on Lesser Nighthawks, this distance is greater (≥ 18 mm). See photo left of Common Nighthawk, arrow shows white patch is under one of the primary coverts. If a Lesser, then the patch would begin nearer the tan arrow. Because it can be difficult to tell where the primary coverts end on a similarly colored primary, this mark may not be helpful in the field but can be a helpful mark when evaluating photographs.



continues next page

In Flight. Determining the location of the patch on the wing of a moving bird is subjective - even when captured by photographs. Four photographs below show adult male Common Nighthawks (breeding males, Port Fourchon): note how different angles affect the impression of the patch's location (and whether the wing tip and edge of patch forms an equilateral, isosceles, or scalene triangle sometimes cited as a useful field mark). Instead, if you count primaries from outermost (in this case outermost starts with 1) inward, on Commons the patch is adjacent to 6 or more. Compare to male Lesser Nighthawks (photos at right below (LBRC 2013-022 from Johnsons Bayou on 1 Apr 2013; 2013-045 from Belle Pass on 20 Nov 2014) where patch is closer to wing tip at 5. In flight, the number of primaries with white is also useful comparing adult males - note that more white is visible on the under wing because of how feathers are arranged and whether the inner web is visible. As previously mentioned, in general, Lessers have four or fewer primaries with white compared to Commons with five.



However, female and immature Commons have less white than do adult males (photos below left; see also spread wing of female on previous page). Not only is the overall size of the white patch reduced, but also white crosses fewer primaries on females (and, especially, immature females) than on adult males, which may affect interpretation of patch location. So, it is important to ascertain sex to use this mark - or this mark can assist to determine sex/age. Although the patch is less extensive on females and



immatures, the actual location of the band on the wing is the same.

Note also, that if the white patch does not cross the outer web of P10 (or is a restricted small spot), then this also supports identification as a Common Nighthawk. On male Lessers, there is a large patch of white on the outer web of P10 so that white crosses the wing tip (see spread wing previous page and photo of perched bird previous page). In flight, the dark outer web of a Common appears to form an outline around the white patch - compare to a Lesser where the white patch separates the dark leading edge of the wing tip. Female Lessers have a buffy or mostly buffy band and the wing is spotted with buff. It is important to be aware that a single photo may not accurately depict wing characters and a series of photos is always preferable.

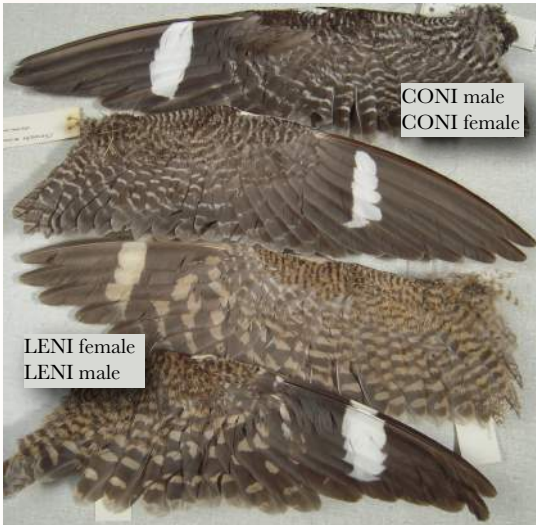


Some Common Nighthawks have limited pale (whitish to rufous) spotting or mottling on the inner primaries and secondaries (see immature Common above, and spread wings previous page), buff spotting is never as extensive as it is on a Lesser. LBRC 2000-098 from near Holly Beach 18 Apr 2000 (photo of carcass left) illustrates the extensive buff spotting on a female Lesser's primaries. The amount of spotting visible depends on how much the wing is spread and whether the inner webs are also visible. See the female Lesser Nighthawk, LBRC 2010-049 from Johnsons Bayou on 25 Apr 2010; photo at right): the white inner web (below thumb) would not be visible on the folded wing. Note the relative position of the patch on both of the Lessers (photos right and left) is closer to the wing tip (count 4 primaries) and much farther from the bend of the wing (compare to Commons previous pages). Another helpful mark visible in the two photos of these Lessers is the prominent round white spots on the inner wing coverts (white arrow at right), present on most Lessers and not as well-defined on most Commons.



Spotting in the remiges. Note prominent buff spots in the inner webs of the primaries interior to the patch on Lesser (next page bottom two spread wings; see also images above). Some Commons can have limited spotting (some individuals have buff), but it is never as extensive or the spots as large as on a Lesser. Be aware that spotting is more noticeable on the under wing (review upper spread wings on p. 34) and is extensive on the secondaries and secondary coverts of both species.

(Below). Top two wings are adult male and female Common, respectively, and bottom two are adult female and male Lesser, respectively; these wings show underside. Notice that the white or buff band crosses to the outer web of P10 on the Lesser Nighthawks and not the Commons. Pattern of barring on under wing lining has been suggested as a mark (Pyle 1997) but note similarity of patterns between female Common and Lesser. When seen together, Lessers will generally look browner on the under wing as compared to Common.

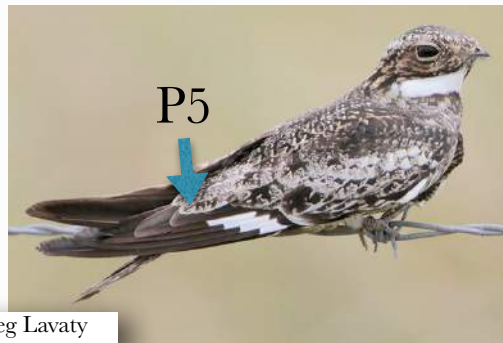
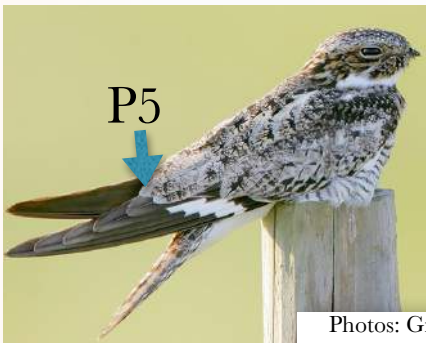


Specimens at LSU Museum of Natural Science provided an invaluable resource and many of the older specimens are identified to subspecies by H. C. Oberholser himself. Additional information obtained from the LBRC files and website, as well as the Central Southern/Louisiana region card file. Photos in this article by DLD unless otherwise acknowledged.

Literature cited above and in this Newsletter (without links in text):

Lowery, G. H. Jr. 1974. Birds of Louisiana. 3rd. edition. Kingsport Press, Tennessee.
 Oberholser, H. C. 1914. A monograph of the genus *Chordeiles*, Swainson type of a new family of goatsuckers. Bulletin of the United States National Museum 86: pp. vii + 123.
 Pyle, P. 1997. Identification Guide to North American Birds. Part 1. Columbidae to Ploceidae. Slate Creek Press, Bolinas, CA.

Review of patch location and placement on male Common Nighthawk. Note also variation of P5 location under or beyond tertials.



Photos: Greg Lavaty

Photos left illustrate extent of white patch on the outer web of P10 on perched nighthawks. If absent (left) or restricted to a small spot(right), then indicates a Common Nighthawk. Note also the very white undertail coverts on the right hand image also indicating a male Common. Although the white band on the tail is inconspicuous/ not visible, the extensive white throat also indicates a male.

Test below: identify species, sex, plumage. Quiz photos courtesy of Greg Lavaty.



ANSWERS. Top row: left = Lesser (adult female- buff spotting beginning under P5); middle = Common (adult female, no white on throat, white patch not visible under P5, buffy flanks); right = Lesser (adult male- white patch under P5, extensive white outer web of P9; the apparent dark border is actually shadow below the feather). Bottom row: left = Common (adult male- white patch not visible under P5, so it's farther in, and has white under tail coverts); middle = Common- (in Juvenal plumage, pale tips to primaries, white patch barely visible and well away from wing tip); right = Common (adult male- patch under P4). Note horizontal row of discrete light round spots across upper wing coverts on the two Lessers.

The Louisiana Bird Records Committee



LBRC Newsletter

design & editor:
Donna L. Dittmann

Current LBRC Members

SPECIAL THANKS
TO THE
FOLLOWING FOR
REVIEWING
MULTIPLE
DRAFTS OF THIS
NEWSLETTER:
PAUL E. CONOVER,
JAMES M. BISHOP,
AND
ROBERT C. DOBBS.

SOME MISTAKES
ALWAYS SEEM TO
DEFY DETECTION.
IF YOU SPOT ANY
ERRORS OR
OMISSIONS IN
THIS ISSUE.
PLEASE SEND
CORRECTIONS TO
THE SECRETARY.
THANK YOU!

Officers:

Secretary

Donna L. Dittmann
donnaldittmann@gmail.com



LSU Museum of Natural Science
119 Foster Hall
Baton Rouge, LA 70803-3216
225-578-2009 (work)
225-642-5763 (home)

Chair

Steven W. Cardiff



scardif@gmail.com

Museum of Natural Science, 119 Foster Hall
Louisiana State University, Baton Rouge, LA 70803
225-578-9289 (work)
225-642-5763 (home)

Voting Members:

Phillip A. Wallace

wallap424@gmail.com
205 N. Main St.
Abbeville, LA 70510
504-628-0146 (cell)



John Dillon

kisforkryptonite@gmail.com
183 Dance Rd.
Athens, LA 71003
318-243-2284 (cell)



Curtis C. Sorrells

csorrells@bellsouth.net
112 Chateau St. Michel
Kenner, LA 70065
504-469-2225 (home)



Robert C. Dobbs

rcdobbs@gmail.com
105 Beechwood Dr.
Lafayette, LA 70503
970-402-3024 (cell)



Nancy L. Newfield

nancy@casacolibri.net
Casa Colibri
3016 45th St.
Metairie, LA 70001
504-835-3882(home);
504-338-3882 (cell)



Erik I. Johnson

ejohnson@audubon.org
102 Goodwood Circle
Lafayette, LA 70508
225-252-8864 (cell)



LBRC website:

Paul E. Conover
zoiseaux@lusfiber.net
501 Adrienne
Lafayette, LA 70506
337-235-3594 (home)



May 27, 2015